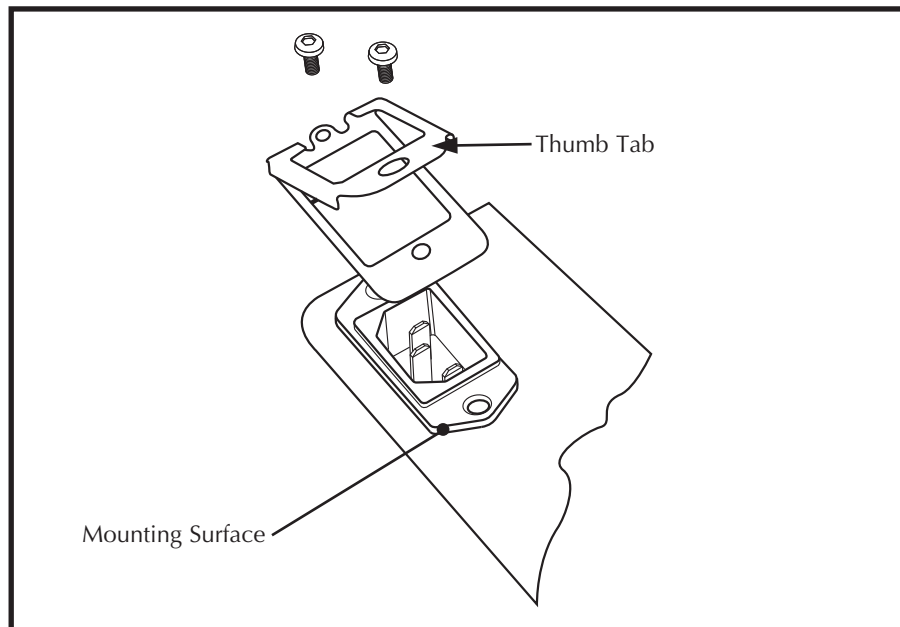


To Install Connector Lock

(For use only with molded IEC 60320 plug connectors & connectors)

1. Remove the two mounting screws of the inlet or outlet.
2. Place connector lock on inlet, aligning the hole to the mounting holes with the thumb tab pointing away from mounting surface.
3. Reinstall mounting screws (M4 max) through the connector lock and inlet holes, and fasten to component.

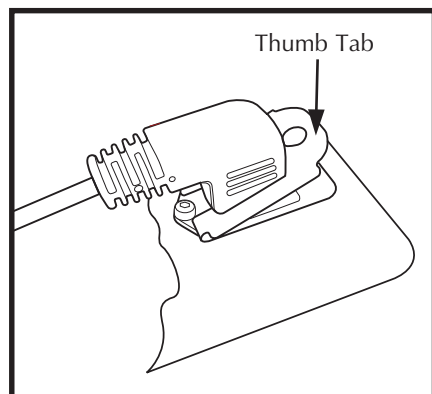


Do's and Don'ts

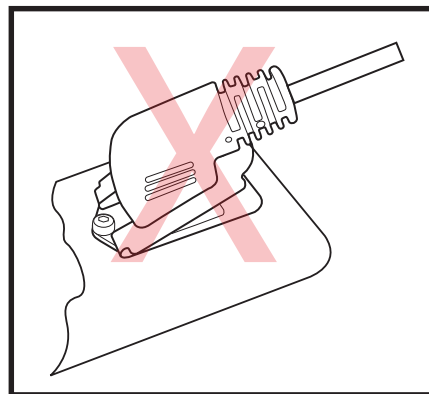
Interpower® connector locks are manufactured to hold Interpower connectors firmly in place. They may also work with products from other companies. If needed, for connectors with a larger C13 body, it is suggested to use Interpower connector lock P/N 85910510; for connectors with a smaller Sheet E plug connector body, it is suggested to use Interpower connector lock P/N 85910500.

Note: If using angled connectors, orientate the thumb tab opposite of the cable exit direction.

Correct

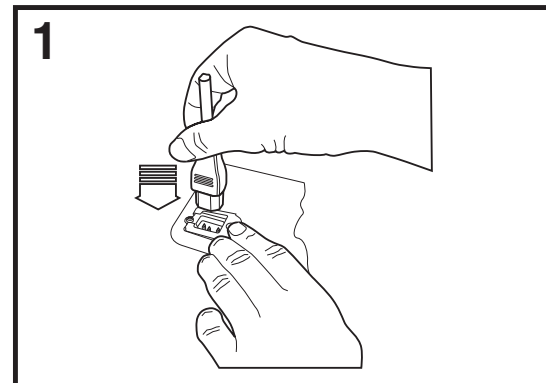


Incorrect



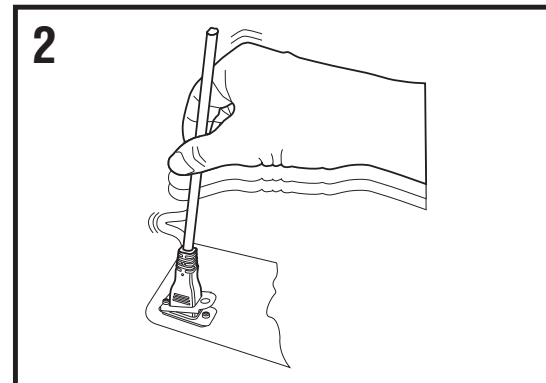
To Insert and Remove Connector

1



Depress the thumb tab and fully insert the connector into the inlet or outlet.

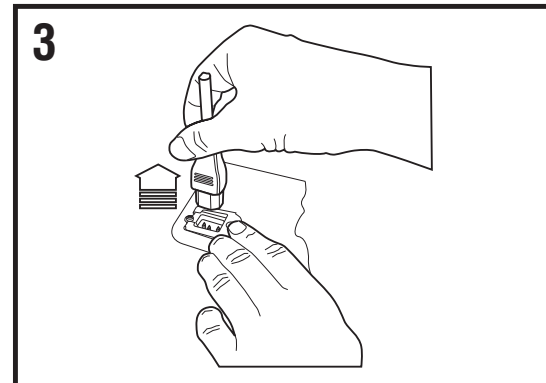
2



Release the thumb tab which will automatically engage the lock, holding the connector in place.

Note: For MAXIMUM retention capability, lift thumb tab while securing the connector in the fully inserted position.

3



To remove the connector, depress the thumb tab and hold down while extracting the connector from the inlet or outlet.