

T

3-WIRE FLANGED INLET AND OUTLET WIRING INSTRUCTIONS

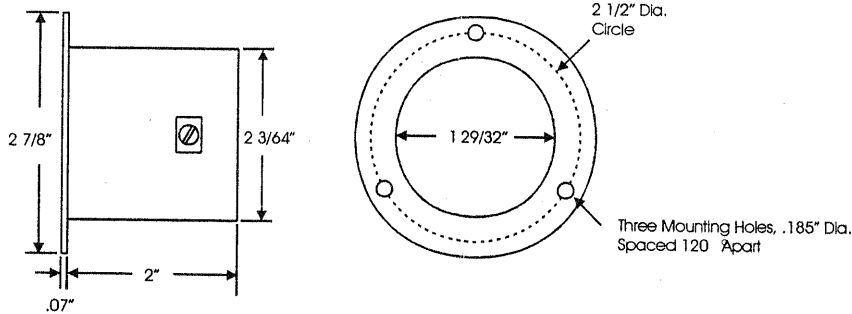
WARNING:

To prevent electrocution, make sure power is off, and cannot be turned back on while installing the inlets.

Inlets must be installed by a qualified electrician.

Failure to comply with the following instructions could cause an electrical failure or fire.

- Make sure the inlet has the proper electrical rating for the system on which it is being installed.
- Wire size and type must comply with appropriate local electrical codes. The inlet is designed for #12 through #8 AWG.
- Strip the wire insulation 1/2".
- Use copper wire only. Make sure the wire is clean, and a bright copper color.
- Do not solder the ends of the wire.
- Insert each wire into the appropriate wire terminal. Make sure there is no wire insulation in any terminal, and tighten the terminal screws to 20 inch-pounds torque.



MARINCO

2655 Napa Valley Corporate Drive, Napa, CA 94556
(707)226-8600 FAX (707)226-9670

12/99

101923

88030090

88030500

88030040

88030530

88030440

88030540

88030330

88030550

88030460

88030560

88030450

88030660

88030470

88030650

88030490

88030630

88030480

88030640

88030510