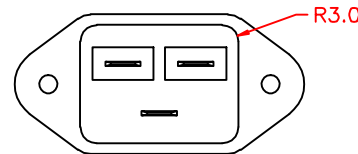
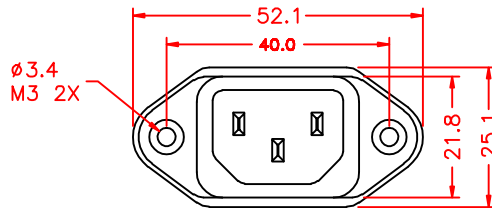
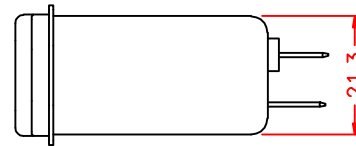
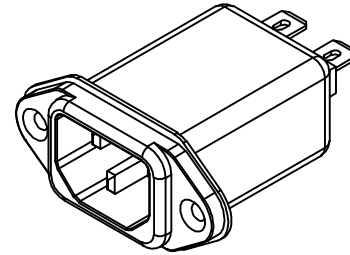
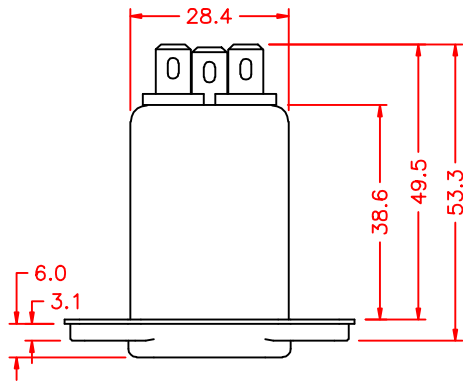
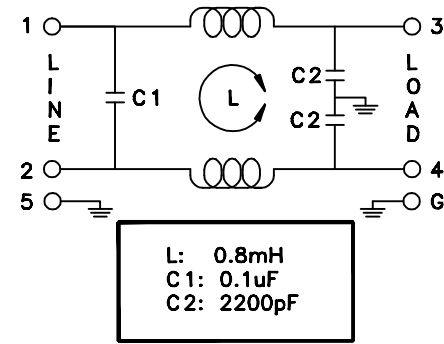
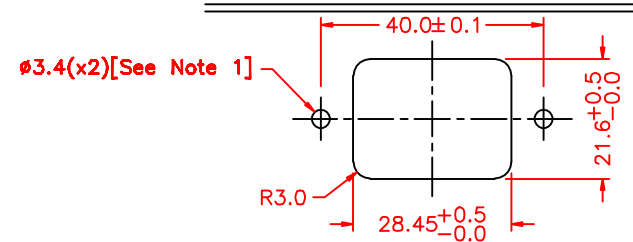


Maximum Leakage Current (L-G) @115VAC/60Hz	Maximum Leakage Current (L-G) @250VAC/50Hz	Min. common mode insertion loss (L-G) (dB in 50 ohm sys.) Freq. - MHz							
		.01	.05	.10	.15	.50	1.0	5.0	10
0.2mA	0.4mA	Min. differential mode insertion loss (L-L) (dB in 50 ohm sys.) Freq. - MHz							
		/	6	10	12	18	24	35	40



**SUGGESTED MOUNTING CUTOUT  
(MOUNTING FROM FRONT)**



**Note 1: Recommended diameter for thru-hole (screw/nut combination) hardware mounting method. Other methods will require holes with different dimensions and parameters.**

THIS DOCUMENT AND ITS CONTENTS ARE THE PROPRIETARY CONFIDENTIAL PROPERTY OF INTERPOWER CORPORATION. NO USE OR COPIES MAY BE MADE WITHOUT WRITTEN PERMISSION FROM INTERPOWER CORPORATION.

**DIMENSIONS IN MILLIMETERS**

TITLE  
**EMI FILTER**

DRAFT BY: **ATS/NWH** DATE: **04/24/08**

PART NUMBER: **83510413**

DRAFTING APPROVAL: **JPC** DATE: **06/04/08**

MATERIAL:

DO NOT SCALE

**INTERPOWER CORPORATION**

SHEET **1 OF 1**

A	Added dimension information to cutout screw holes and Note 1.	3/28/12
REV	CHANGE DESCRIPTION	DATE