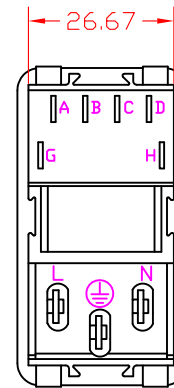
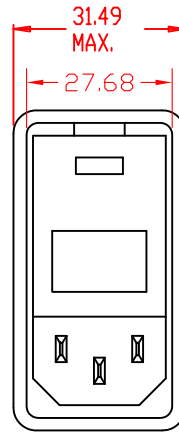
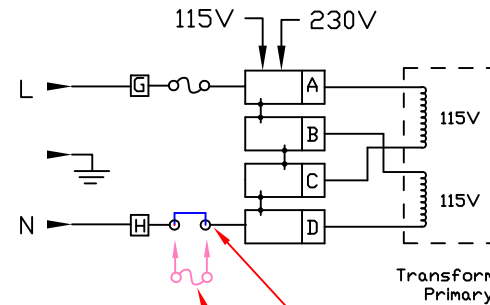
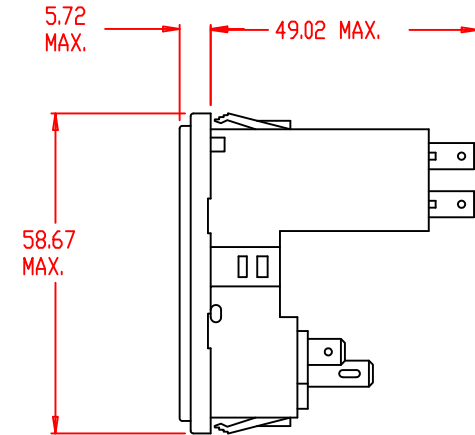


* Dimension for panel thickness of 0.8 to 2.0mm.
For panel thickness of 2.1 to 2.9mm, use value of 56.21mm.



Back View
Unfiltered



Factory Installed Fuse Clip (Jumper) *

Double fuse option. *

* Note: Removal of the fuse clip allows the user the option of installing a second fuse for use in applications requiring double fusing.

THIS DOCUMENT AND ITS CONTENTS ARE THE PROPRIETARY CONFIDENTIAL PROPERTY OF INTERPOWER CORPORATION. NO USE OR COPIES MAY BE MADE WITHOUT WRITTEN PERMISSION FROM INTERPOWER CORPORATION.

REV	CHANGE DESCRIPTION	DATE	INITIALS
D	Corrected typo in panel thickness: .08 to 0.8mm.	1/20/15	DDF
C	Updated drawing - new boss design/location.	1/20/11	DDF
B	Added back view to drawings.	6/21/07	DDF
A	Altered schematic & entered notes regarding double fusing option (for clarification)	02/09/05	DDF

DIMENSIONS IN MILLIMETERS		TITLE Module	
DRAFT BY:	DDF	DATE:	02/09/05
DRAFTING APPROVAL:	JC	DATE:	02/09/05
MATERIAL:		PART NUMBER:	83543020
		DO NOT SCALE	INTERPOWER CORPORATION
		SHEET 1 OF 1	