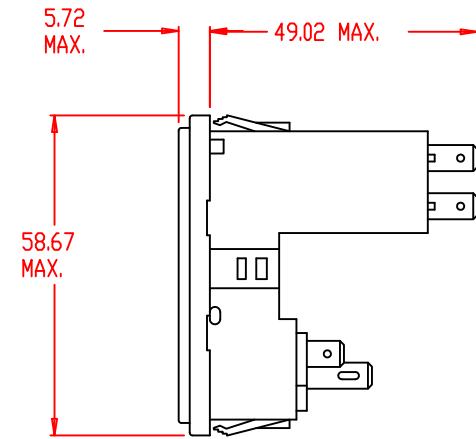
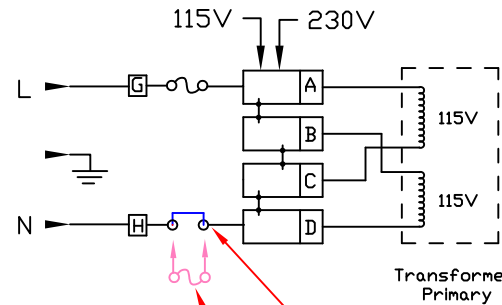


Back View Unfiltered



* Dimension for panel thickness of 0.8 to 2.0mm.
For panel thickness of 2.1 to 2.9mm, use value of 56.21mm.



Factory Installed Fuse Clip (Jumper) *

Double fuse option. *

* Note: Removal of the fuse clip allows the user the option of installing a second fuse for use in applications requiring double fusing.

THIS DOCUMENT AND ITS CONTENTS ARE THE PROPRIETARY CONFIDENTIAL PROPERTY OF INTERPOWER CORPORATION. NO USE OR COPIES MAY BE MADE WITHOUT WRITTEN PERMISSION FROM INTERPOWER CORPORATION.

				DIMENSIONS IN MILLIMETERS		TITLE Module	
				DRAFT BY: DDF DATE: 7/21/17		PART NUMBER: 83543021	
				DRAFTING APPROVAL: DDF DATE: 7/21/17		INTERPOWER CORPORATION	
				MATERIAL:		DD NOT SCALE	
						SHEET 1 OF 1	
REV	CHANGE DESCRIPTION	DATE	INITIALS				
A	New part replacing 83543020.	7/21/17	DDF				