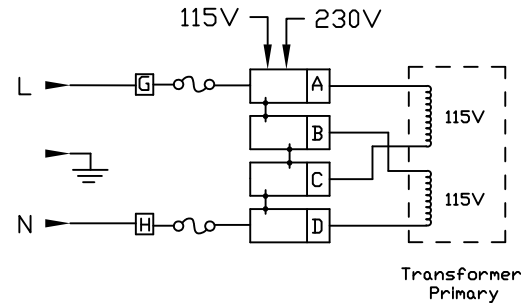


Stamp hole from installation side to insure proper engagement of snap mechanisms.



* Dimension for panel thickness of 0.8 to 2.0mm. For panel thickness of 2.1 to 2.9mm, use value of 56.21mm.

THIS DOCUMENT AND ITS CONTENTS ARE THE PROPRIETARY CONFIDENTIAL PROPERTY OF INTERPOWER CORPORATION. NO USE OR COPIES MAY BE MADE WITHOUT WRITTEN PERMISSION FROM INTERPOWER CORPORATION.

DIMENSIONS IN MILLIMETERS

TITLE Module

DRAFT BY: DDF DATE: 7/24/17

PART NUMBER: 83543031

DRAFTING APPROVAL: DDF DATE: 7/24/17

MATERIAL:

DD NOT SCALE

INTERPOWER CORPORATION

SHEET 1 OF 1

REV	CHANGE DESCRIPTION	DATE	INITIALS
A	Introduction of part replacing 83543030.	7/24/17	DDF