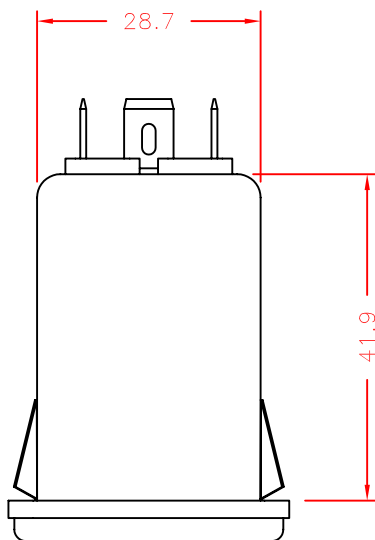
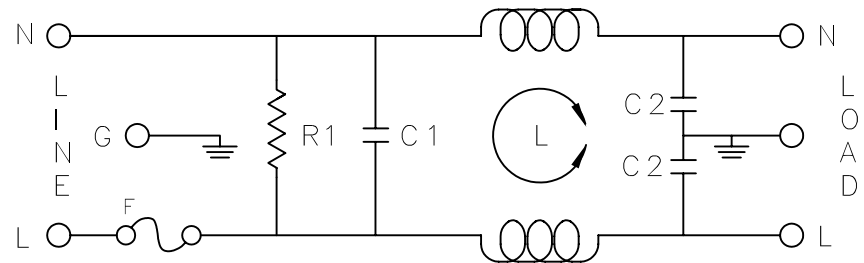
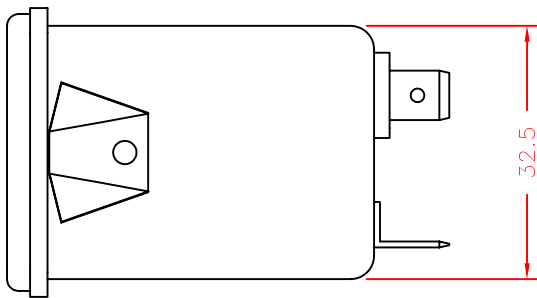
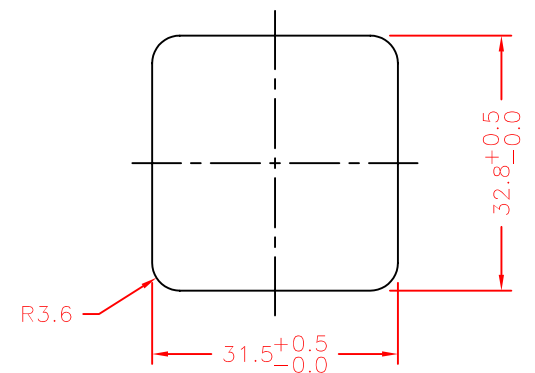
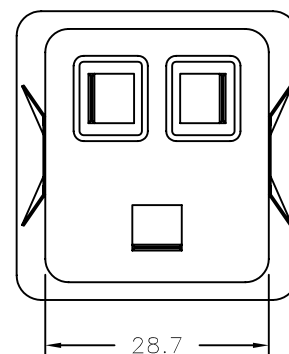
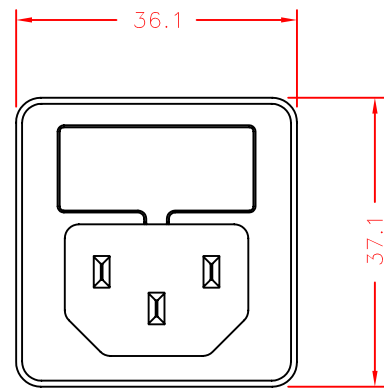


Maximum Leakage Current (L-G) @115VAC/60Hz	Maximum Leakage Current (L-G) @250VAC/50Hz	C1 Capacitor	C2 Capacitors	Inductor	Min. common mode insertion loss (L-G) (dB in 50 ohm sys.) Freq. - MHz								Min. differential mode insertion loss (L-L) (dB in 50 ohm sys.) Freq. - MHz							
					.05	.10	.15	.50	1.0	5.0	10	30	.05	.10	.15	.50	1.0	5.0	10	30
0.25mA	0.42mA	.033 μ F(X2)	2x2200pF(Y)	2x0.6mH	1	4	10	16	22	36	40	50	0	0	2	10	13	33	39	42



SUGGESTED MOUNTING CUTOUT
(MOUNTING FROM FRONT)



THIS DOCUMENT AND ITS CONTENTS ARE THE PROPRIETARY CONFIDENTIAL
PROPERTY OF INTERPOWER CORPORATION. NO USE OR COPIES
MAY BE MADE WITHOUT WRITTEN PERMISSION FROM INTERPOWER CORPORATION.

DIMENSIONS IN MILLIMETERS

TITLE

EMI FILTER

DRAFT BY: ATS/NWH DATE: 04/24/08

PART

NUMBER: 83543100

DRAFTING
APPROVAL:

DATE:

MATERIAL:

DO NOT SCALE

INTERPOWER
CORPORATION

REV

CHANGE DESCRIPTION

DATE

SHEET 1 OF 1