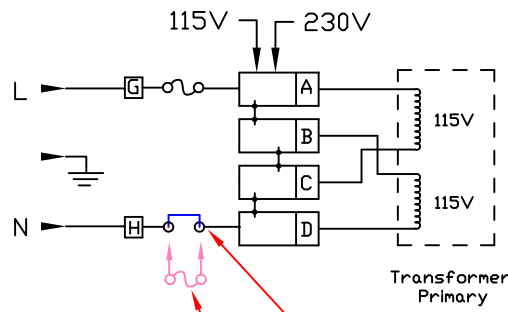
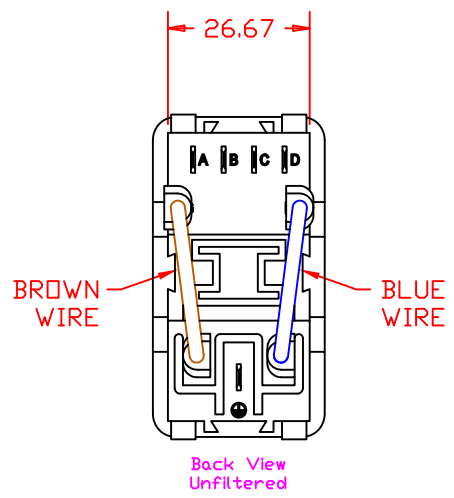


\* Dimension for panel thickness of 0.8 to 2.0mm.  
For panel thickness of 2.1 to 2.9mm, use value of 56.21mm.



Factory Installed Fuse Clip (Jumper) \*

Double fuse option. \*

\* Note: Removal of the fuse clip allows the user the option of installing a second fuse for use in applications requiring double fusing.

THIS DOCUMENT AND ITS CONTENTS ARE THE PROPRIETARY CONFIDENTIAL PROPERTY OF INTERPOWER CORPORATION. NO USE OR COPIES MAY BE MADE WITHOUT WRITTEN PERMISSION FROM INTERPOWER CORPORATION.

DIMENSIONS IN MILLIMETERS		TITLE Prewired Module	
DRAFT BY: DDF	DATE: 7/25/17	PART NUMBER: 83543521	INTERPOWER CORPORATION
DRAFTING APPROVAL: DDF	DATE: 7/25/17		
MATERIAL:	DD NOT SCALE	SHEET 1 OF 1	

REV	CHANGE DESCRIPTION	DATE	INITIALS
A	Introduction of product replacing 83543520.	7/25/17	DDF