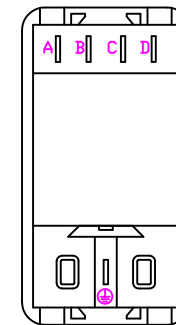


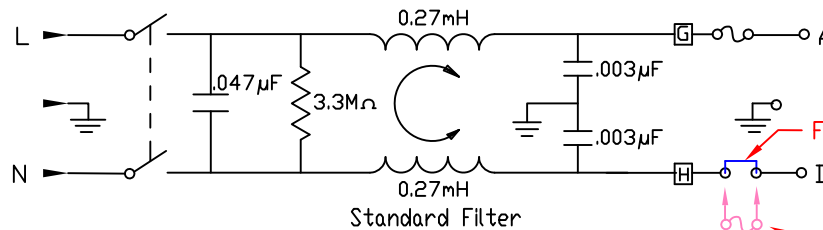
Stamp hole from installation side to insure proper engagement of snap mechanisms.

* Dimension for panel thickness of 0.8 to 2.0mm. For panel thickness of 2.1 to 2.9mm, use value of 56.21mm.



Back View Filtered

Filter Specifications																			
Max. Leakage Current (L-G) @ 120VAC/60Hz	Max. Leakage Current (L-G) @ 250VAC/50Hz		Min. common mode insertion loss (L-G) (dB in 50 ohm system) Freq. - MHz							Min. differential mode insertion loss (L-L) (dB in 50 ohm system) Freq. - MHz									
			.03	.10	.15	.50	1.0	3.0	5.0	10	30	.10	.15	.50	1.0	3.0	5.0	10	30
Hospital Grade			Hospital Grade Models																
2.0 micro-amps	5.0 micro-amps	10 A	3	5	8	10	12	11	11	10	10	2	4	12	16	26	33	40	32
Standard			Standard Models																
0.25 mA	0.50 mA	10 A	3	5	10	13	23	27	35	27	2	4	12	15	22	42	55	45	



Factory Installed Fuse Clip (Jumper) *

Double fuse option. *

* Note: Removal of the fuse clip allows the user the option of installing a second fuse for use in applications requiring double fusing.

THIS DOCUMENT AND ITS CONTENTS ARE THE PROPRIETARY CONFIDENTIAL PROPERTY OF INTERPOWER CORPORATION. NO USE OR COPIES MAY BE MADE WITHOUT WRITTEN PERMISSION FROM INTERPOWER CORPORATION.

DIMENSIONS IN MILLIMETERS

TITLE Module

DRAFT BY: JPC DATE: 5-5-2003

PART NUMBER: 83544000

DRAFTING APPROVAL: DATE:

MATERIAL:

DO NOT SCALE

INTERPOWER CORPORATION

SHEET 1 OF 1

REV	CHANGE DESCRIPTION	DATE	INITIALS
C	Corrected typo in panel thickness: .08 to 0.8mm.	1/20/15	DDF
B	Updated drawing - new boss design/location.	1/27/11	DDF
A	Added back view to drawing.	6/21/07	DDF