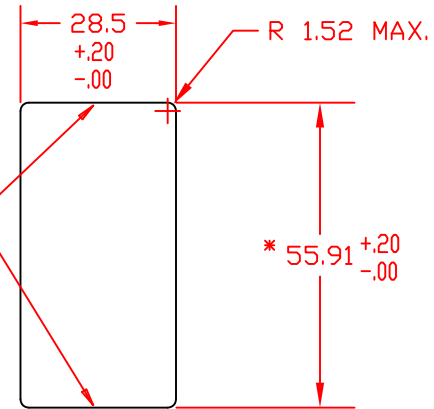
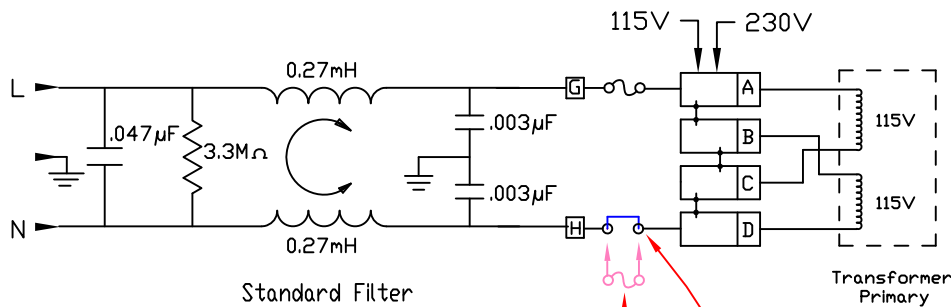


Back View Filtered



Stamp hole from installation side to insure proper engagement of snap mechanisms.

* Dimension for panel thickness of 0.8 to 2.0mm. For panel thickness of 2.1 to 2.9mm, use value of 56.21mm.



Factory Installed Fuse Clip (Jumper) *

Double fuse option. *

* Note: Removal of the fuse clip allows the user the option of installing a second fuse for use in applications requiring double fusing.

Filter Specifications																			
Max. Leakage Current (L-G) @ 120VAC/60Hz	Max. Leakage Current (L-G) @ 250VAC/50Hz		Min. common mode insertion loss (L-G) (dB in 50 ohm system) Freq. - MHz				Min. differential mode insertion loss (L-L) (dB in 50 ohm system) Freq. - MHz												
			.03	.10	.15	.50	1.0	3.0	5.0	10	30	.10	.15	.50	1.0	3.0	5.0	10	30
Hospital Grade			Hospital Grade Models																
2.0 micro-amps	5.0 micro-amps	10 A	3	5	8	10	12	11	11	10	10	2	4	12	16	26	33	40	32
Standard			Standard Models																
0.25 mA	0.50 mA	10 A	3	5	10	13	23	27	35	27	2	4	12	15	22	42	55	45	

THIS DOCUMENT AND ITS CONTENTS ARE THE PROPRIETARY CONFIDENTIAL PROPERTY OF INTERPOWER CORPORATION. NO USE OR COPIES MAY BE MADE WITHOUT WRITTEN PERMISSION FROM INTERPOWER CORPORATION.

REV	CHANGE DESCRIPTION	DATE	INITIALS
C	Corrected typo in panel thickness: .08 to 0.8mm.	1/20/15	DDF
B	Updated drawing - new boss design/location.	1/27/11	DDF
A	Added back view to drawing.	6/21/07	DDF

DIMENSIONS IN MILLIMETERS

DRAFT BY: JPC	DATE: 5-5-2003
DRAFTING APPROVAL:	DATE:
MATERIAL:	DO NOT SCALE
	SHEET 1 OF 1

TITLE Module

PART NUMBER: 83544010

INTERPOWER CORPORATION