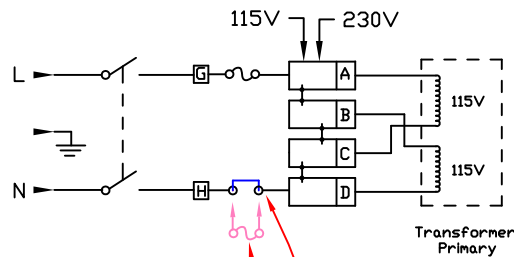


∅3.2(x2)[See Note 1]

This cutout is good for both front and back mounting applications. However, with back mount applications, the panel thickness is recommended to not exceed 1.5mm.



Factory Installed Fuse Clip (Jumper) *

Double fuse option. *

* Note: Removal of the fuse clip allows the user the option of installing a second fuse for use in applications requiring double fusing.

Note 1: Recommended diameter for thru-hole (screw/nut combination) hardware mounting method. Other methods will require holes with different dimensions and parameters.

THIS DOCUMENT AND ITS CONTENTS ARE THE PROPRIETARY CONFIDENTIAL PROPERTY OF INTERPOWER CORPORATION. NO USE OR COPIES MAY BE MADE WITHOUT WRITTEN PERMISSION FROM INTERPOWER CORPORATION.

				DIMENSIONS IN MILLIMETERS		TITLE Module	
				DRAFT BY: DDF	DATE: 7/26/17	PART NUMBER: 83544021	INTERPOWER CORPORATION
				DRAFTING APPROVAL: DDF	DATE: 7/26/17		
A	Introduction of part replacing 83544020.	7/26/17	DDF	MATERIAL:		DD NOT SCALE	SHEET 1 OF 1
REV	CHANGE DESCRIPTION	DATE	INITIALS				