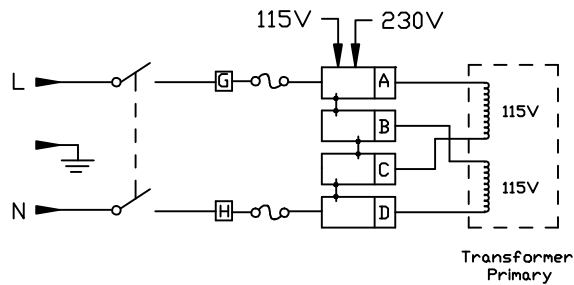
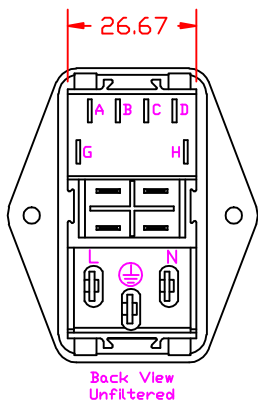


∅3.2(x2)[See Note 1]

This cutout is good for both front and back mounting applications. However, with back mount applications, the panel thickness is recommended to not exceed 1.5mm.



Note 1: Recommended diameter for thru-hole (screw/nut combination) hardware mounting method. Other methods will require holes with different dimensions and parameters.

THIS DOCUMENT AND ITS CONTENTS ARE THE PROPRIETARY CONFIDENTIAL PROPERTY OF INTERPOWER CORPORATION. NO USE OR COPIES MAY BE MADE WITHOUT WRITTEN PERMISSION FROM INTERPOWER CORPORATION.

				DIMENSIONS IN MILLIMETERS		TITLE Module	
D	Added dimension information to cutout screw holes and Note 1.	4/10/12	DDF	DRAFT BY: JPC	DATE: 5-5-2003	PART NUMBER: 83544030	INTERPOWER CORPORATION
C	Added countersink information.	1/11/11	DDF	DRAFTING APPROVAL: JPC	DATE: 5-5-2003		
B	Updated drawing for boss changes.	10/08/10	DDF	MATERIAL:		DO NOT SCALE	SHEET 1 OF 1
A	Added back view to drawing.	6/21/07	DDF				
REV	CHANGE DESCRIPTION	DATE	INITIALS				