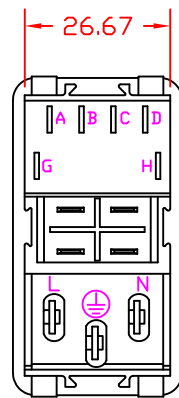
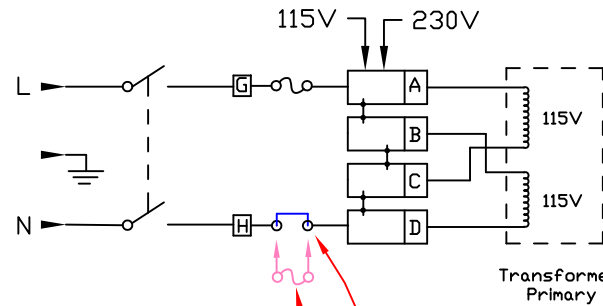


* Dimension for panel thickness of 0.8 to 2.0mm.
For panel thickness of 2.1 to 2.9mm, use value of 56.21mm.



Back View
Unfiltered



Factory Installed Fuse Clip (Jumper) *

Double fuse option. *

* Note: Removal of the fuse clip allows the user the option of installing a second fuse for use in applications requiring double fusing.

THIS DOCUMENT AND ITS CONTENTS ARE THE PROPRIETARY CONFIDENTIAL PROPERTY OF INTERPOWER CORPORATION. NO USE OR COPIES MAY BE MADE WITHOUT WRITTEN PERMISSION FROM INTERPOWER CORPORATION.

DIMENSIONS IN MILLIMETERS

TITLE Module

DRAFT BY: DDF DATE: 7/26/17

PART NUMBER: 83544041

DRAFTING APPROVAL: DDF DATE: 7/26/17

MATERIAL:

DD NOT SCALE

INTERPOWER CORPORATION

REV A Introduction of part replacing 83544040.

7/26/17 DDF

CHANGE DESCRIPTION

DATE INITIALS

SHEET 1 OF 1