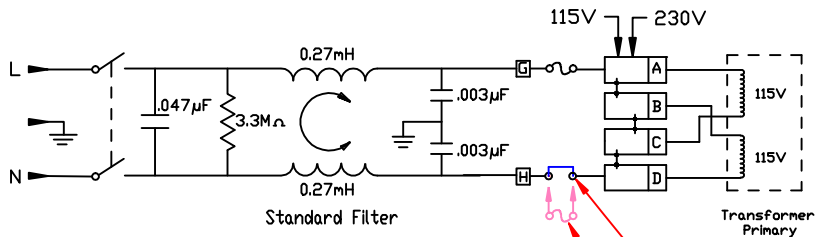
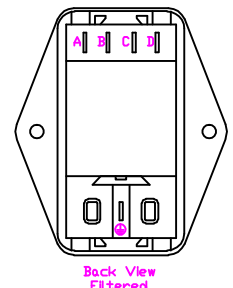


This cutout is good for both front and back mounting applications. However, with back mount applications, the panel thickness is recommended to not exceed 1.5mm.

Filter Specifications			
Max. Leakage Current (L-G) @ 120VAC/60Hz	Max. Leakage Current (L-G) @ 250VAC/50Hz	Min. common mode insertion loss (L-G) (dB in 50 ohm system) Freq. - MHz	Min. differential mode insertion loss (L-L) (dB in 50 ohm system) Freq. - MHz
Hospital Grade		.03 .10 .15 .50 1.0 3.0 5.0 10 30	.10 .15 .50 1.0 3.0 5.0 10 30
2.0 micro-amps	5.0 micro-amps	Hospital Grade Models	
Standard		Standard Models	
0.25 mA	0.50 mA	10 A	3 5 8 10 12 11 11 10 10   2 4 12 16 26 33 40 32
		10 A	3 5 10 13 23 27 35 27   2 4 12 15 22 42 55 45



Note 1: Recommended diameter for thru-hole (screw/nut combination) hardware mounting method. Other methods will require holes with different dimensions and parameters.

\* Note: Removal of the fuse clip allows the user the option of installing a second fuse for use in applications requiring double fusing.

THIS DOCUMENT AND ITS CONTENTS ARE THE PROPRIETARY CONFIDENTIAL PROPERTY OF INTERPOWER CORPORATION. NO USE OR COPIES MAY BE MADE WITHOUT WRITTEN PERMISSION FROM INTERPOWER CORPORATION.

THIS DOCUMENT AND ITS CONTENTS ARE THE PROPRIETARY CONFIDENTIAL PROPERTY OF INTERPOWER CORPORATION. NO USE OR COPIES MAY BE MADE WITHOUT WRITTEN PERMISSION FROM INTERPOWER CORPORATION.				DIMENSIONS IN MILLIMETERS		TITLE Module	
D	Added dimension information to cutout screw holes and Note 1.	4/4/12	DDF	DRAFT BY: JC	DATE: 05-05-03	PART NUMBER: 83545000	
C	Updated drawing - new boss design/location.	1/27/11	DDF	DRAFTING APPROVAL: JC	DATE: 05-05-03	INTERPOWER CORPORATION	
B	Added countersink information.	1/11/11	DDF	MATERIAL:		DO NOT SCALE	
A	Added back view to drawing.	6/21/07	DDF			SHEET 1 OF 1	
REV	CHANGE DESCRIPTION	DATE	INITIALS			INTERPOWER CORPORATION	