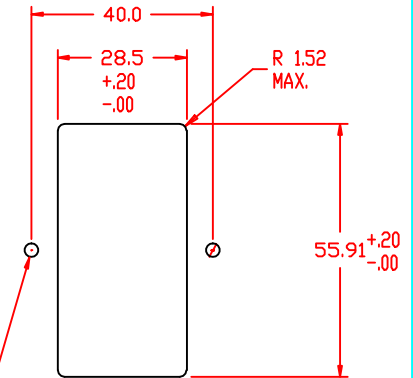
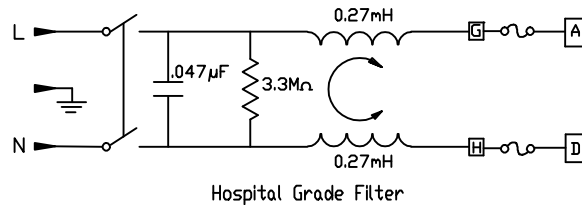


Ø3.2(x2)[See Note 1]



This cutout is good for both front and back mounting applications. However, with back mount applications, the panel thickness is recommended to not exceed 1.5mm.

Filter Specifications			
Max. Leakage Current (L-G) @ 120VAC/60Hz	Max. Leakage Current (L-G) @ 250VAC/50Hz	Min. common mode Insertion loss (L-G) (dB in 50 ohm system) Freq. - MHz	Min. differential mode Insertion loss (L-L) (dB in 50 ohm system) Freq. - MHz
Hospital Grade		.03 .10 .15 .50 1.0 3.0 5.0 10 30	.10 .15 .50 1.0 3.0 5.0 10 30
Hospital Grade Models			
2.0 micro-amps	5.0 micro-amps	10 A	3 5 8 10 12 11 11 10 2 4 12 16 26 33 40 32
Standard Models			
0.25 mA	0.50 mA	10 A	3 5 10 13 23 27 35 27 2 4 12 15 22 42 55 45



Note 1: Recommended diameter for thru-hole (screw/nut combination) hardware mounting method. Other methods will require holes with different dimensions and parameters.

THIS DOCUMENT AND ITS CONTENTS ARE THE PROPRIETARY CONFIDENTIAL PROPERTY OF INTERPOWVER CORPORATION. NO USE OR COPIES MAY BE MADE WITHOUT WRITTEN PERMISSION FROM INTERPOWVER CORPORATION.

REVISIONS				DIMENSIONS IN MILLIMETERS		TITLE	
D	Added dimension information to cutout screw holes and Note 1.	4/4/12	DDF	DRAFT BY: DDF		4 Function Dbl.Fuse Filtered Hospital Grade Module	
C	Updated description in title block to say "Hospital Grade"	2/23/12	RLT	DATE: 7-17-2007		PART NUMBER: 83545070	
B	Updated drawing - new boss design/location.	1/27/11	DDF	DRAFTING APPROVAL: DDF		DATE: 7-17-2007	
A	Added countersink information.	1/11/11	DDF	MATERIAL:		DO NOT SCALE	
REV	CHANGE DESCRIPTION	DATE	INITIALS			SHEET 1 OF 1	
						INTERPOWVER CORPORATION	