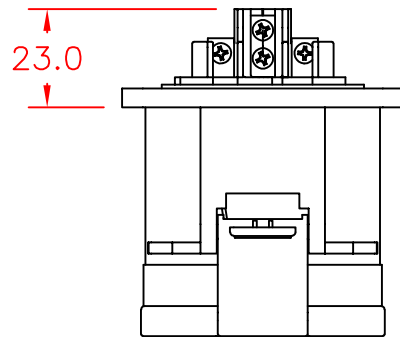
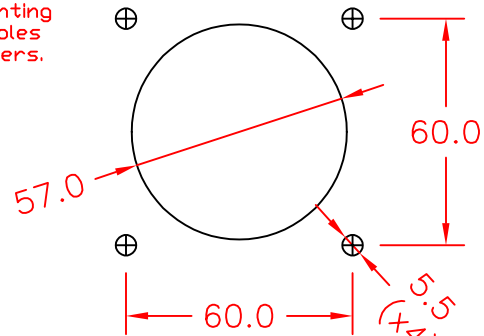


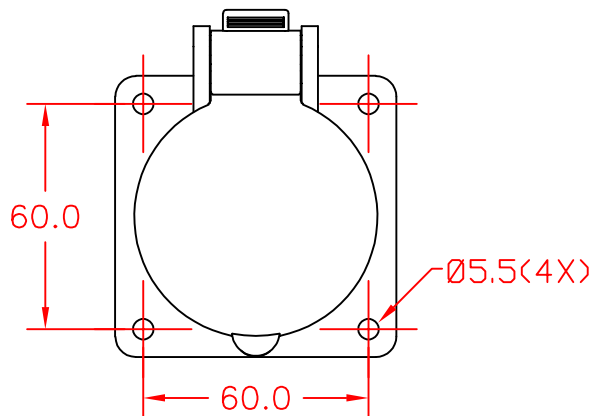
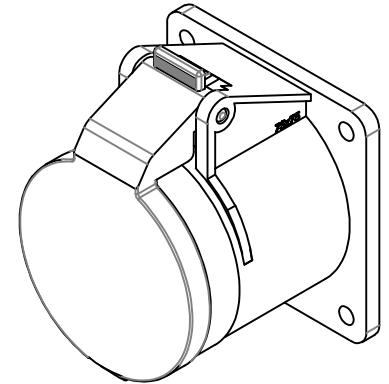
Note 1: Recommended diameter for thru-hole (screw/nut combination) hardware mounting method. Other methods will require holes with different dimensions and parameters.



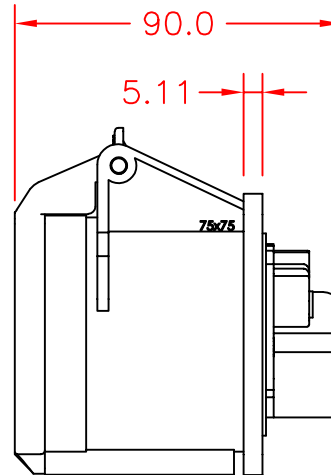
TOP VIEW



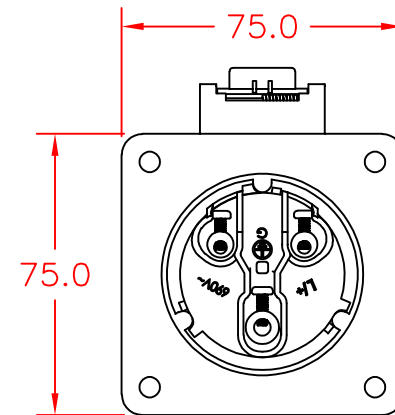
CUTOUT VIEW



FRONT VIEW  
(SHOWN WITH LID OPEN)



SIDE VIEW



BACK VIEW

THIS DOCUMENT AND ITS CONTENTS ARE THE PROPRIETARY CONFIDENTIAL PROPERTY OF INTERPOWER CORPORATION. NO USE OR COPIES MAY BE MADE WITHOUT WRITTEN PERMISSION FROM INTERPOWER CORPORATION.

DIMENSIONS IN MILLIMETERS

TITLE 32/30A 6hr Receptacle 2P 3W IP44

DRAFT BY: ATS/DEG DATE: 08/27/19

DRAFTING APPROVAL: DDF DATE: 08/28/19

PART NUMBER: 84232205

MATERIAL: -

SCALE: HALF SCALE

INTERPOWER CORPORATION

REV	CHANGE DESCRIPTION	INITIALS	DATE
A	Introduction of part replacing 84232204.	DDF	8/28/19

SHEET 1 OF 1