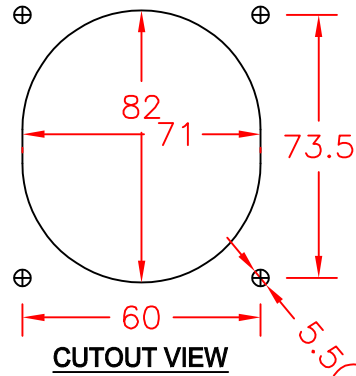
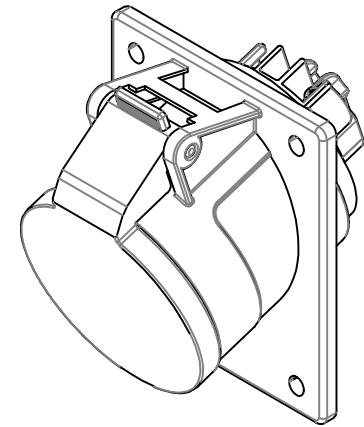


TOP VIEW

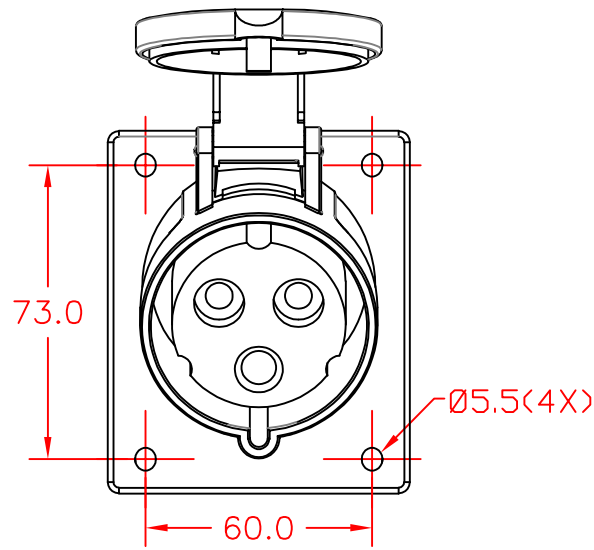


CUTOUT VIEW

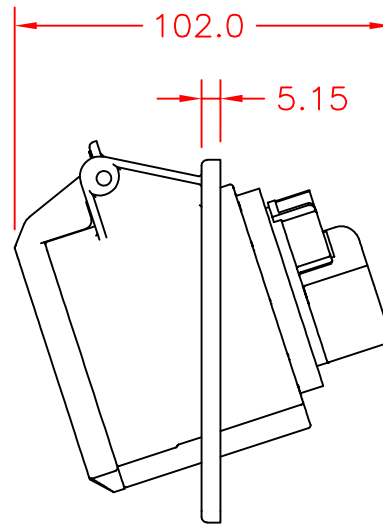


Note 1: Recommended diameter for thru-hole (screw/nut combination) hardware mounting method. Other methods will require holes with different dimensions and parameters.

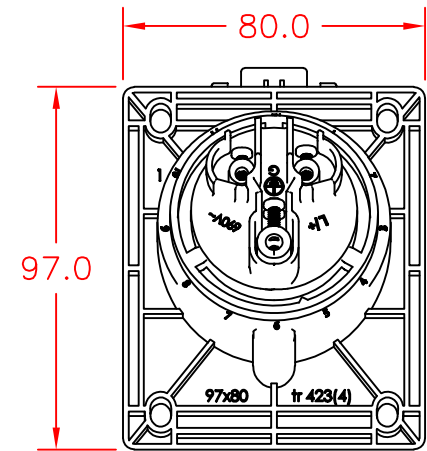
5.5(x4) [See Note 1]



**FRONT VIEW
(SHOWN WITH LID OPEN)**



SIDE VIEW



BACK VIEW

THIS DOCUMENT AND ITS CONTENTS ARE THE PROPRIETARY CONFIDENTIAL PROPERTY OF INTERPOWER CORPORATION. NO USE OR COPIES MAY BE MADE WITHOUT WRITTEN PERMISSION FROM INTERPOWER CORPORATION.

DIMENSIONS IN MILLIMETERS

TITLE 32/30A 6hr 15° Receptacle

DRAFT BY: **ATS/DEG** DATE: 08/23/19

PART NUMBER: 84232235

DRAFTING APPROVAL: **DDF** DATE: 08/28/19

MATERIAL: -

SCALE: HALF SCALE

INTERPOWER CORPORATION

SHEET 1 OF 1

REV	CHANGE DESCRIPTION	INITIALS	DATE
A	Introduction of replacement for 84232234.	DDF	8/28/19