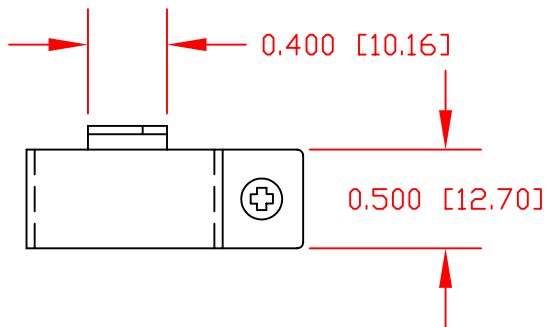


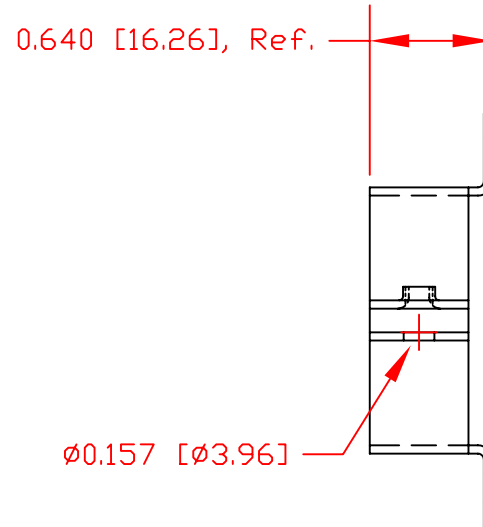
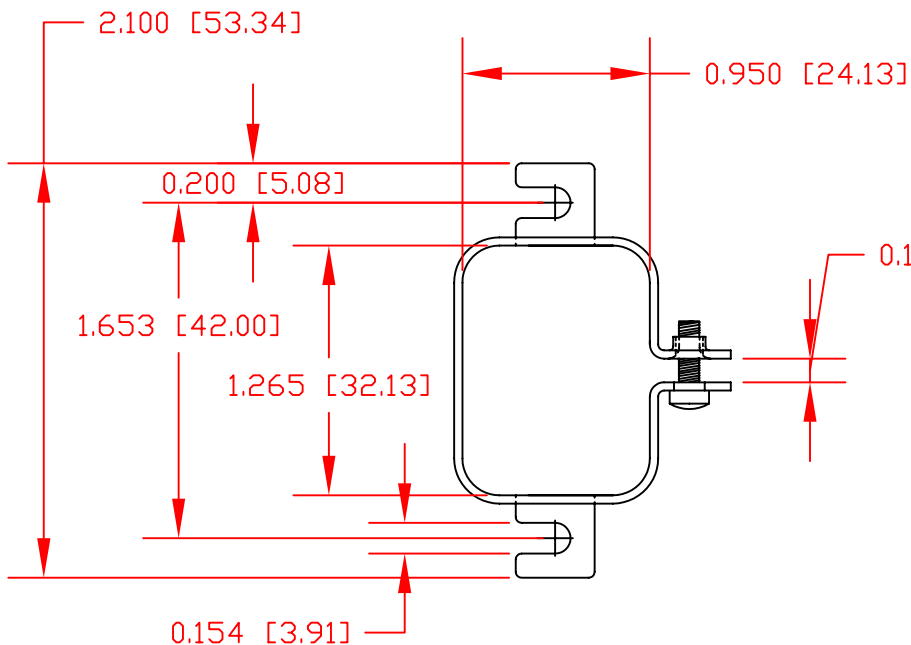
| | | | |
|-----|-----|-----------|-------|
| R/M | R/A | NEXT ASSY | MODEL |
| | | | |



FINISH: E-Coat Epoxy Black PowerCron 590

NOTE UNITS: INCHES [MILLIMETERS]

Screw size 6-32 Round philips head



REF.

| | | | | | | | | | |
|------|--|------------|--|--------------------|------------------|---------------------------|----------------------|-----|------|
| F | Change finish to E-coat Epoxy - by J. C. | 01-17-2007 | | REQD /DASH NO | ITEM NUMBER | .042 [1.067] CRS #4T/1010 | MATERIAL DESCRIPTION | SYM | |
| B | Redrawn | 12/11/00 | UNLESS OTHERWISE SPEC. DIMNS. IN INCHES. ANSI Y14.5M-1982. STD. TOLERANCES: X.X ± .060 X.XX ± .030 X.XXX ± .010 FRAC.DIM. ± 1/32 DEG. ± 1° | DESIGN BY: | DATE: | TITLE CONNECTOR LOCK | | | |
| C | Chgd. .120 dim. in top view to .140, .480 to .490 & 1.7 to 1.653 in frt. view. | 5/2/01 | | DRAFT BY: | DATE: 12/5/00 | DRAWING NUMBER: 85910051 | | | CODE |
| D | Chgd. 0.620 to 0.640 Ref. | 06/20/01 | | DRAFTING APPROVAL: | DESIGN APPROVAL: | INTERPOWER PRODUCTS | | | |
| E | Chg. Finish to Trivalent Chromate - (J.C.) | 02-20-06 | | ENG. NUMBER: | SIZE A | DO NOT SCALE | | | |
| LET. | CHANGE DESCRIPTION | DATE | | | | SHEET OF | | | |