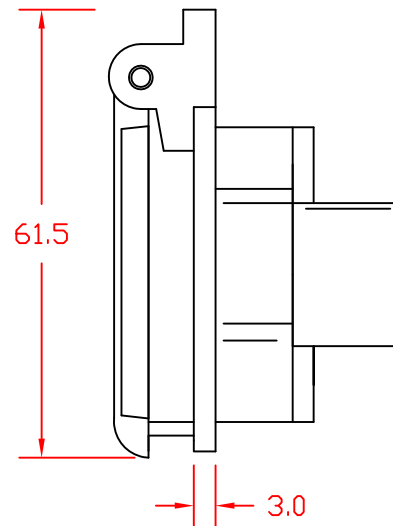
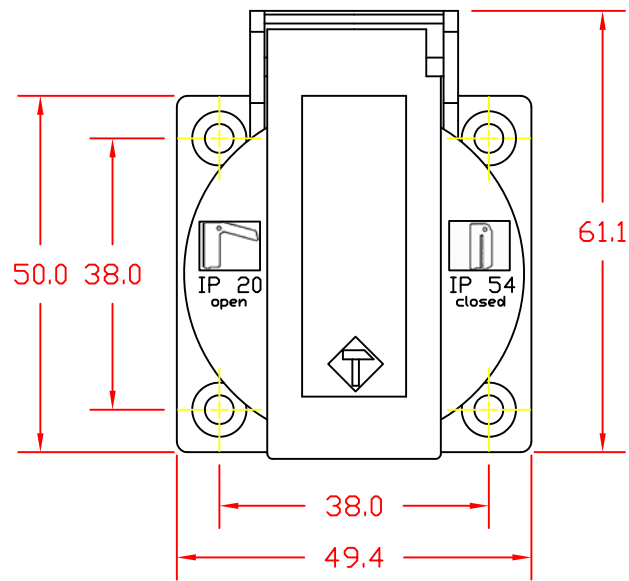


Note 1: Recommended diameter for thru-hole (screw/nut combination) hardware mounting method. Other methods will require holes with different dimensions and parameters.



WARNING: Neutral & Line connections can be reversed.
CEE7 sockets are not polarized.

THIS DOCUMENT AND ITS CONTENTS ARE THE PROPRIETARY CONFIDENTIAL PROPERTY OF INTERPOWER CORPORATION. NO USE OR COPIES MAY BE MADE WITHOUT WRITTEN PERMISSION FROM INTERPOWER CORPORATION.				DIMENSIONS IN MILLIMETERS		TITLE CEE7 Socket	
C	Added screw hole dimensions and Note 1.	09/16/11	DDF	DRAFT BY: JPC	DATE: 5-5-2003	PART NUMBER: 88010300	INTERPOWER CORPORATION
B	Updated drawing with dual IP ratings.	04/18/11	DDF	DRAFTING APPROVAL: JPC	DATE: 5-5-2003		
A	Updated drawing with cover and hinge changes.	10/14/10	DDF	MATERIAL: Thermoplastic		DO NOT SCALE	INTERPOWER CORPORATION
REV	CHANGE DESCRIPTION	DATE	INITIALS			SHEET 1 OF 1	