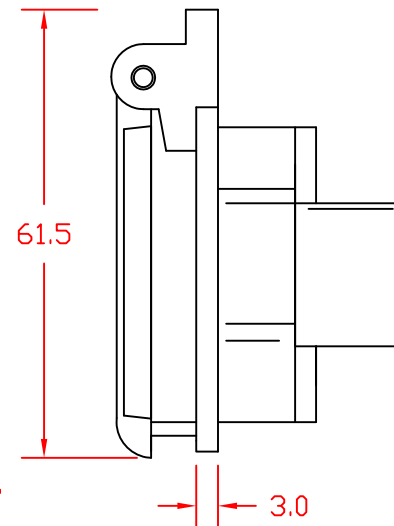
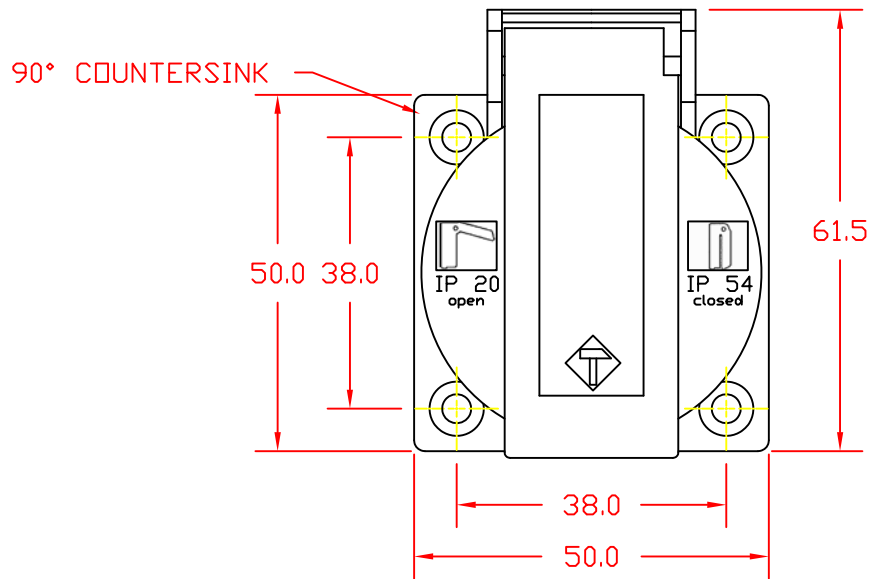


Note 1: Recommended diameter for thru-hole (screw/nut combination) hardware mounting method. Other methods will require holes with different dimensions and parameters.



NOTE: Neutral & Line connections can be reversed. CEE7 sockets are not polarized.

THIS DOCUMENT AND ITS CONTENTS ARE THE PROPRIETARY CONFIDENTIAL PROPERTY OF INTERPOWER CORPORATION. NO USE OR COPIES MAY BE MADE WITHOUT WRITTEN PERMISSION FROM INTERPOWER CORPORATION.				DIMENSIONS IN MILLIMETERS		TITLE CEE7 Socket	
				DRAFT BY: JPC		DATE: 5-5-2003	
C		Added dimensions to screw holes and Note 1.		09/16/11		DDF	
B		Updated drawing with dual IP ratings symbols.		04/19/11		DDF	
A		Updated drawing with cover and hinge changes.		10/14/10		DDF	
REV		CHANGE DESCRIPTION		DATE		INITIALS	
				MATERIAL: Thermoplastic		DO NOT SCALE	
						SHEET 1 OF 1	
				INTERPOWER CORPORATION			