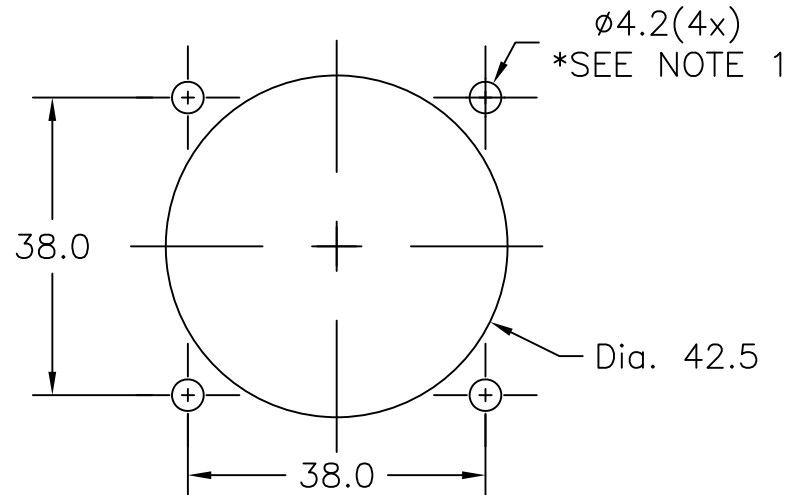
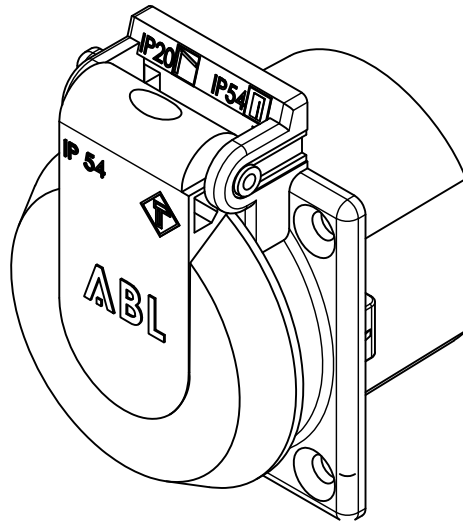
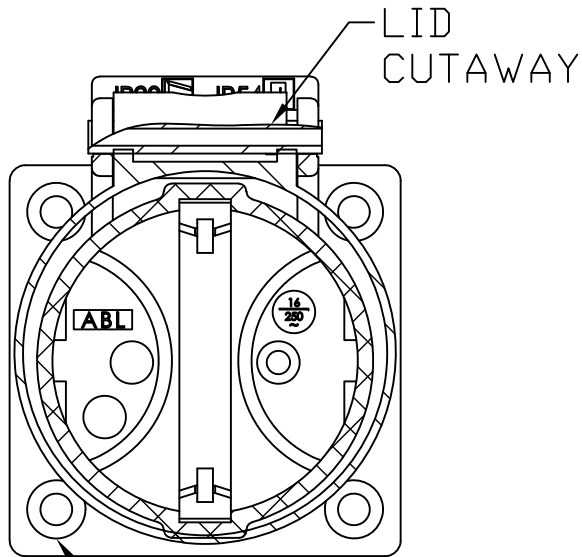


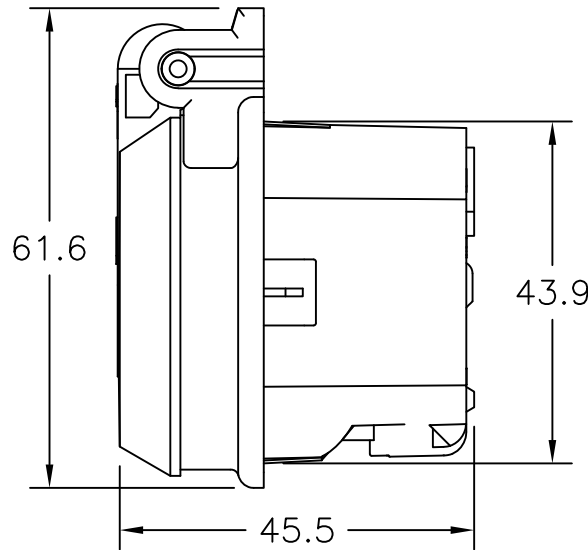
TOP VIEW



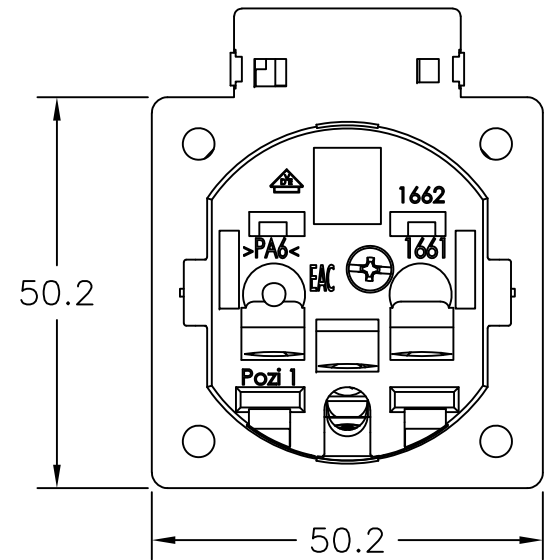
Note 1: Recommended diameter for thru-hole (screw/nut combination) hardware mounting method. Other methods will require holes with different dimensions and parameters.



90° COUNTERSINK  
FRONT VIEW



RIGHT SIDE VIEW



BACK VIEW

WARNING: Neutral & Line connections can be reversed.  
CEE7 sockets are not polarized.

THIS DOCUMENT AND ITS CONTENTS ARE THE PROPRIETARY CONFIDENTIAL PROPERTY OF INTERPOWER CORPORATION. NO USE OR COPIES MAY BE MADE WITHOUT WRITTEN PERMISSION FROM INTERPOWER CORPORATION.

DIMENSIONS IN MILLIMETERS

TITLE 16A/250V CONT. EUROPEAN SPLASH RESISTANT SOCKET

DRAFT BY: **ATS/DEG** DATE: 02/16/19

PART NUMBER: 88010352

DRAFTING APPROVAL: **DDF** DATE: 02/20/19

MATERIAL: POLYAMIDE 6

SCALE: FULL SCALE  
SHEET 1 OF 1

INTERPOWER CORPORATION

REV	CHANGE DESCRIPTION	Initials	DATE
A	Intoduction of part replacing 88010350.	DDF	02/20/19