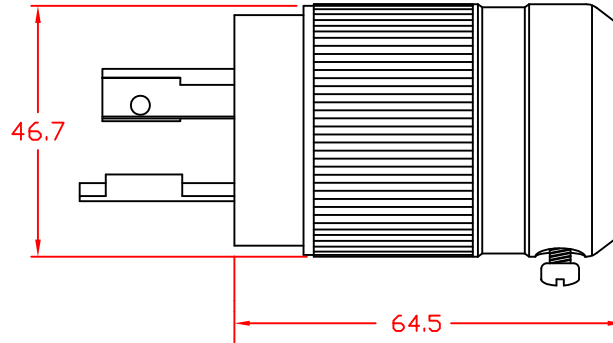
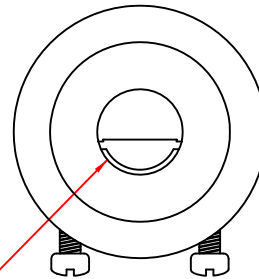


FACE



SIDE VIEW



Cord Accommodation: 7mm to 19.8mm

BACK

THIS DOCUMENT AND ITS CONTENTS ARE THE PROPRIETARY CONFIDENTIAL PROPERTY OF INTERPOWER CORPORATION. NO USE OR COPIES MAY BE MADE WITHOUT WRITTEN PERMISSION FROM INTERPOWER CORPORATION.				DIMENSIONS IN MILLIMETERS		TITLE NEMA L5-20P	
				DRAFT BY: JPC		DATE: 5-5-2003	
A		Corrected anchor points for diameter dimension of plug.		11/21/08		DDF	
MATERIAL:		DO NOT SCALE		INTERPOWER CORPORATION			
REV	CHANGE DESCRIPTION			DATE	INITIALS	SHEET 1 OF 1	