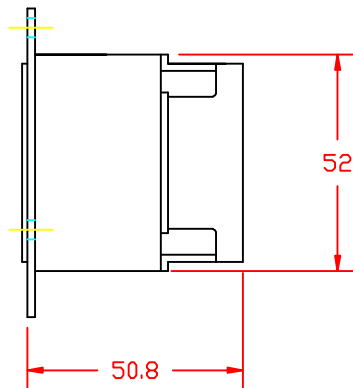
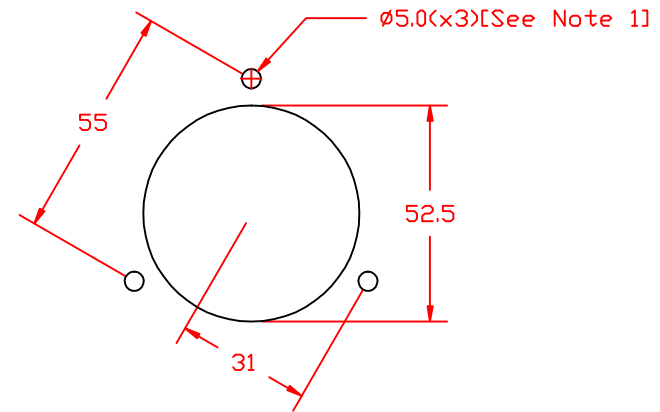


FRONT VIEW



SIDE VIEW



CUTOUT

Note 1: Recommended diameter for thru-hole (screw/nut combination) hardware mounting method. Other methods will require holes with different dimensions and parameters.

THIS DOCUMENT AND ITS CONTENTS ARE THE PROPRIETARY CONFIDENTIAL PROPERTY OF INTERPOWER CORPORATION. NO USE OR COPIES MAY BE MADE WITHOUT WRITTEN PERMISSION FROM INTERPOWER CORPORATION.				DIMENSIONS IN MILLIMETERS		TITLE NEMA L6-20 Flanged Outlet	
				DRAFT BY: JPC		DATE: 6-21-04	
A		Added dimension information to cutout screw holes and Note 1.		3/26/12		DDF	
REV		CHANGE DESCRIPTION		DATE		INITIALS	
				MATERIAL:		DO NOT SCALE	
						SHEET 1 OF 1	
				INTERPOWER CORPORATION			