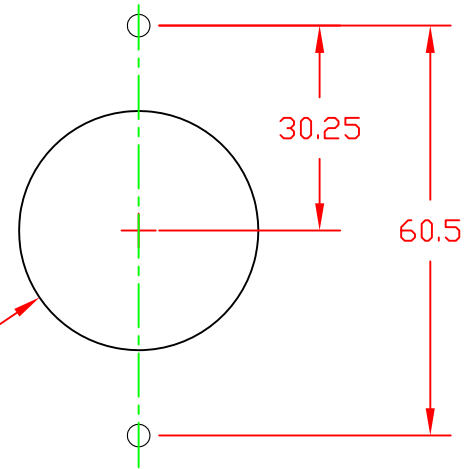


$\phi 35.2^{+0.1}_{-0.2}$ (See Note 1)



Rear Panel Mounting: Cutout

NOTE 1: RECOMMENDED DIAMETER FOR THRU-HOLE (SCREW/NUT COMBINATION) HARDWARE MOUNTING METHOD. OTHER METHODS WILL REQUIRE HOLES WITH DIFFERENT DIMENSIONS AND PARAMETERS.

THIS DOCUMENT AND ITS CONTENTS ARE THE PROPRIETARY CONFIDENTIAL PROPERTY OF INTERPOWER CORPORATION. NO USE OR COPIES MAY BE MADE WITHOUT WRITTEN PERMISSION FROM INTERPOWER CORPORATION.

DIMENSIONS IN MILLIMETERS

TITLE Japanese Panel Mounting Single Receptacle

DRAFT BY: ATS/DEG DATE: 07/06/16

PART NUMBER: 88040350

DRAFTING APPROVAL: DDF DATE: 07/25/16

MATERIAL:

DO NOT SCALE

INTERPOWER CORPORATION

SHEET 1 OF 1

A	New part introduction to product line.	DDF	7/25/16
---	--	-----	---------

REV	CHANGE DESCRIPTION	INITIALS	DATE
-----	--------------------	----------	------