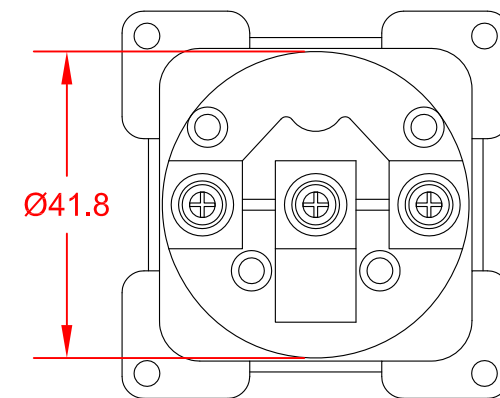
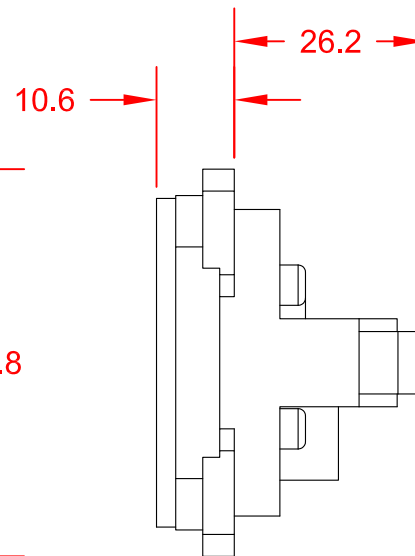
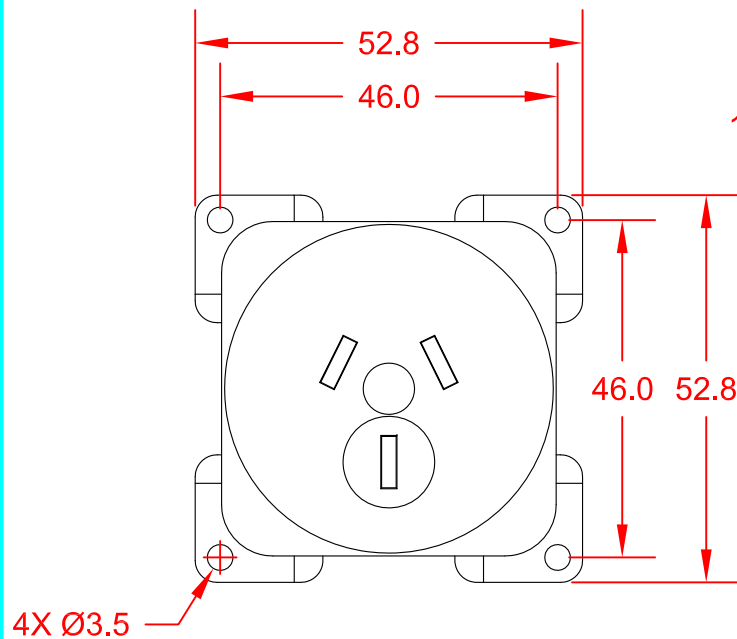
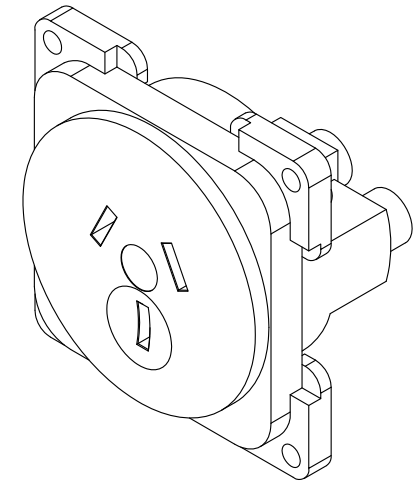


NOTE 1:  
RECOMMENDED DIAMETER FOR THRU-HOLE  
(SCREW/NUT COMBINATION) HARDWARE  
MOUNTING METHOD. OTHER METHODS WILL  
REQUIRE HOLES WITH DIFFERENT DIMENSIONS  
AND PARAMETERS.

PANEL CUTOUT DETAIL



THIS DOCUMENT AND ITS CONTENTS ARE THE PROPRIETARY CONFIDENTIAL PROPERTY OF INTERPOWER CORPORATION. NO USE OR COPIES MAY BE MADE WITHOUT WRITTEN PERMISSION FROM INTERPOWER CORPORATION.				DIMENSIONS IN MILLIMETERS		TITLE	
				DRAFT BY: JPC                      DATE: 11/07/06		Australia Panel Mount Socket	
				DRAFTING APPROVAL: JPC                      DATE: 11/07/06		PART NUMBER: 88052060	
B	UPDATED DESIGN		11/30/15	ATS/NWH			
A	ADDED CUTOUT INFORMATION AND NOTE 1		12/08/11	DDF			
REV	CHANGE DESCRIPTION		DATE	INITIALS	MATERIAL:		INTERPOWER CORPORATION
					SCALE: FULL SCALE		
					SHEET 1 OF 1		