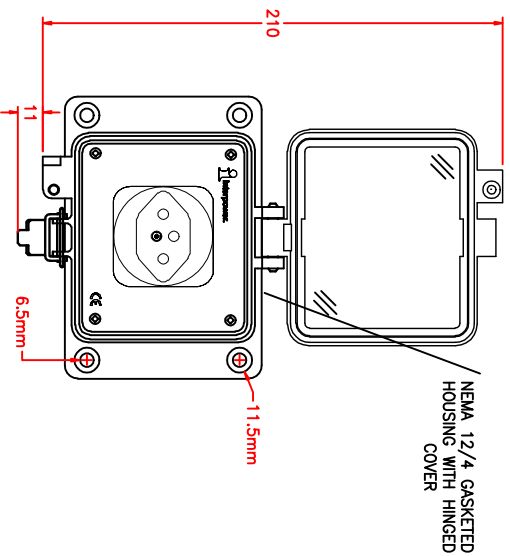
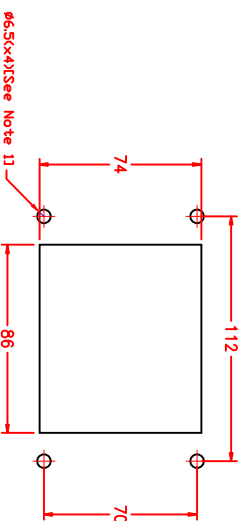


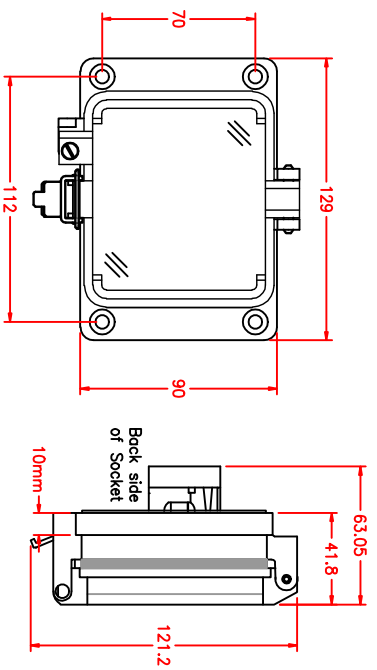
PANEL CUTOUT



NOTE: Screw recess is 5.3mm deep



Note 1: Recommended diameter for thru-hole (screw/nut combination) hardware mounting method. Other methods will require holes with different dimensions and parameters.



THIS DOCUMENT AND ITS CONTENTS ARE THE PROPRIETARY CONFIDENTIAL
PROPERTY OF INTERPOWER CORPORATION. NO USE OR COPIES
MAY BE MADE WITHOUT WRITTEN PERMISSION FROM INTERPOWER CORPORATION.

DIMENSIONS IN MILLIMETERS		TITLE	
DRAFT BY: JC	DATE: 1-24-2007	Swiss Socket w/box	
DRAFTING APPROVAL: JC	DATE: 1-24-2007	PART NUMBER:	88052140
MATERIAL:		DD NOT SCALE	INTERPOW- ER CORPORATION
REV	CHANGE DESCRIPTION	DATE	INITIALS
A	Added dimension information to cutout screw holes and Note 1.	3/20/12	IDF

SHEET 1 OF 1