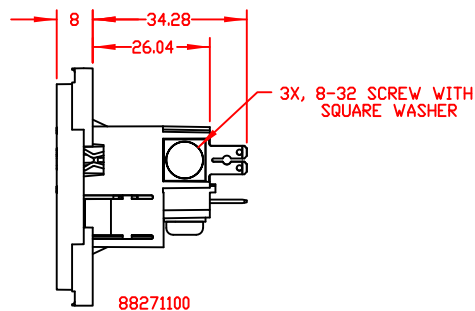
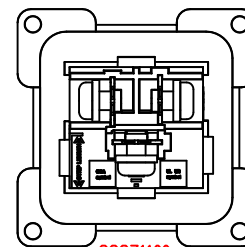


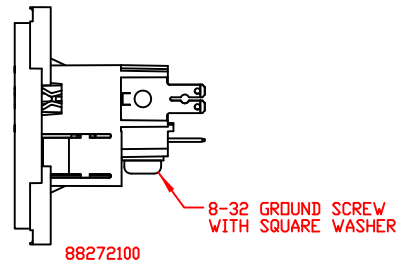
88271100 & 88272100  
QUICK DISCONNECT CONTACTS



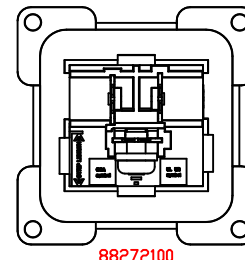
88271100



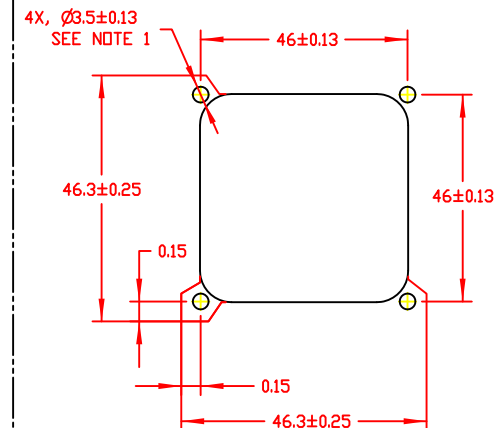
88271100



88272100

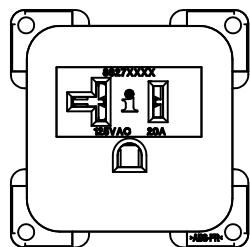


88272100

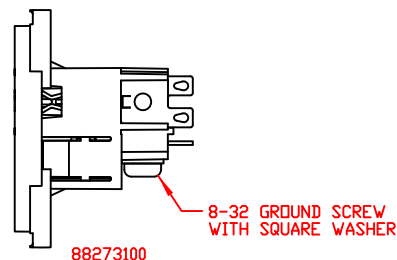


THIS PANEL CUTOUT IS RECOMMENDED  
WHEN USED IN COMBINATION WITH THE  
88052XXX FAMILY OF SOCKETS

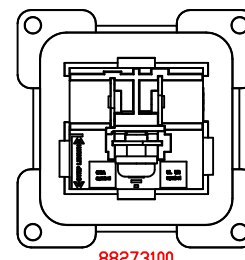
NOTES:  
1. RECOMMENDED DIAMETER FOR THRU-HOLE  
(SCREW/NUT COMBINATION) HARDWARE MOUNTING  
METHOD. OTHER METHODS WILL REQUIRE HOLES  
WITH DIFFERENT DIMENSIONS AND PARAMETERS.



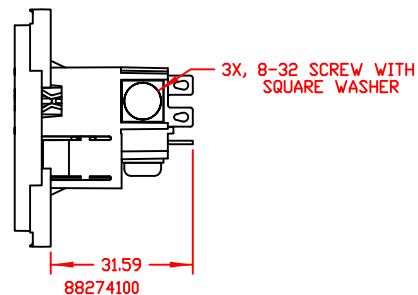
88273100 & 88274100  
SOLDER TAB CONTACTS



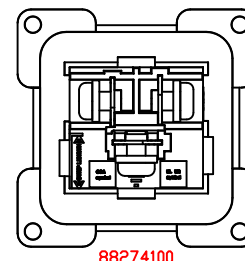
88273100



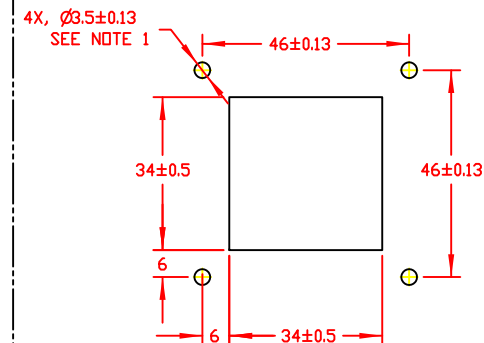
88273100



88274100



88274100



THIS PANEL CUTOUT IS RECOMMENDED  
FOR ALL OTHER APPLICATIONS

THIS DOCUMENT AND ITS CONTENTS ARE THE PROPRIETARY, CONFIDENTIAL PROPERTY OF INTERPOWER CORPORATION. NO USE OR COPIES MAY BE MADE WITHOUT WRITTEN PERMISSION FROM INTERPOWER.

DIMENSIONS IN: MM

TITLE BLACK NEMA 5-20 SCREW  
MOUNT ASSEMBLIES

DRAFT BY: BEM DATE: 9-30-13

PART NUMBER: 88271100, 88272100  
88273100, 88274100

DRAFTING APPROVAL: SRK DATE: 9-30-13

MATERIAL:

DO NOT SCALE

SHEET 1 OF 1

INTERPOWER CORPORATION

1	2	INITIAL RELEASE	10/08/13	DDF
2D	3D	CHANGE DESCRIPTION	DATE	BY
REV				