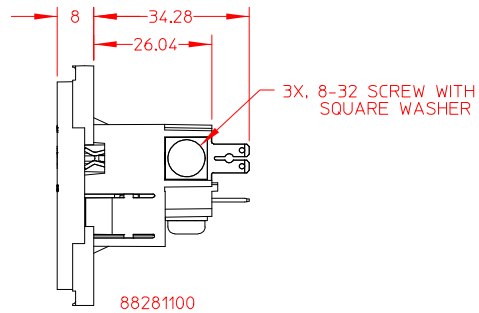
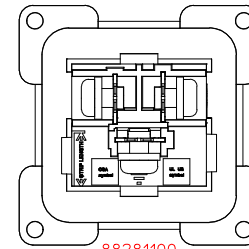


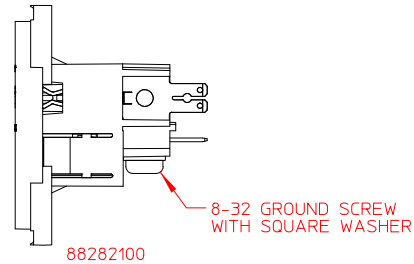
88281100 & 88282100
QUICK DISCONNECT CONTACTS



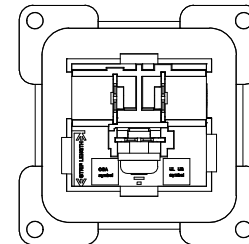
88281100



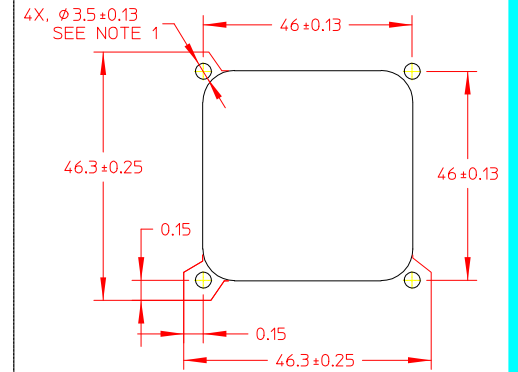
88281100



88282100



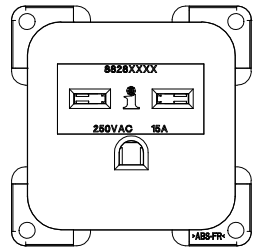
88282100



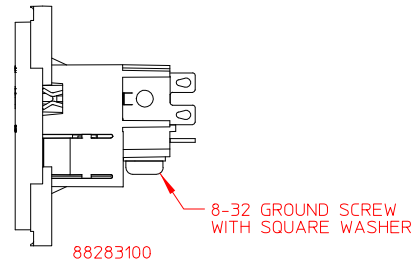
FRONT MOUNT PANEL CUTOUT
(SNAP-ON BEZEL)
OR REAR MOUNT PANEL CUTOUT
(NO SNAP-ON BEZEL)

THIS PANEL CUTOUT IS RECOMMENDED
WHEN USED IN COMBINATION WITH THE
88052XXX FAMILY OF SOCKETS.

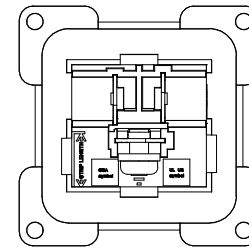
NOTES:
1. RECOMMENDED DIAMETER FOR THRU-HOLE
(SCREW/NUT COMBINATION) HARDWARE MOUNTING
METHOD. OTHER METHODS WILL REQUIRE HOLES
WITH DIFFERENT DIMENSIONS AND PARAMETERS.



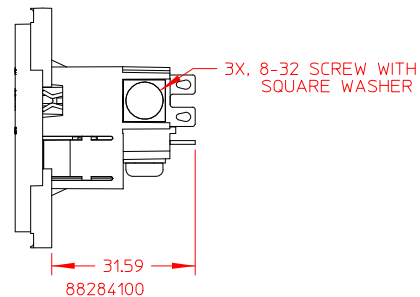
88283100 & 88284100
SOLDER TAB CONTACTS



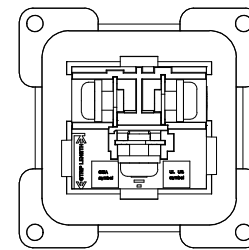
88283100



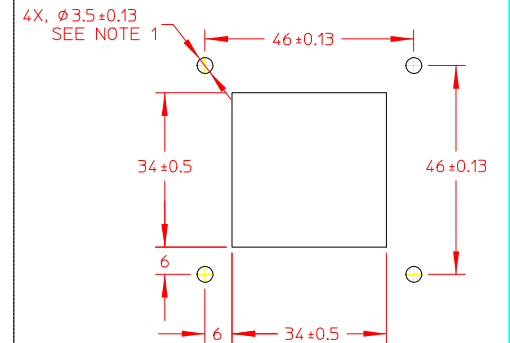
88283100



88284100



88284100



FRONT MOUNT PANEL CUTOUT
(SNAP-ON BEZEL)

THIS PANEL CUTOUT IS RECOMMENDED
FOR ALL OTHER APPLICATIONS.

THIS DOCUMENT AND ITS CONTENTS ARE THE PROPRIETARY, CONFIDENTIAL PROPERTY OF INTERPOWER CORPORATION. NO USE OR COPIES MAY BE MADE WITHOUT WRITTEN PERMISSION FROM INTERPOWER.

DIMENSIONS IN: MM

TITLE NEMA 6-15 SCREW MOUNT
ASSEMBLIES

DRAFT BY: BEM DATE: 8-26-15

PART NUMBER: 88281100, 88282100
88283100, 88284100

DRAFTING APPROVAL: SRK DATE: 8-26-15

MATERIAL:

DO NOT SCALE

INTERPOWER
CORPORATION

SHEET 1 OF 1

REV	DATE	DESCRIPTION	DATE	BY
1	4	INITIAL RELEASE		
2D	3D	CHANGE DESCRIPTION		
REV				