

Back View Filtered

Module Outputs: For applications where a voltage selector is being used in the module, all four connections must be made as shown in the schematic diagram. In applications without a voltage selector, pins A and D are the only outputs needed.

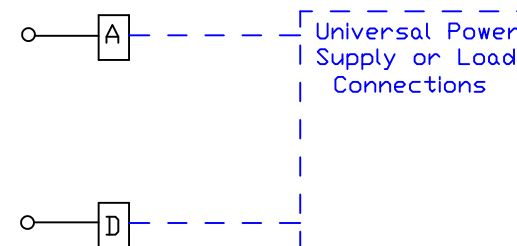
NOTE: Wires shown is brown, blue or green in the illustration to the left, are user made connections.

Wiring Information:

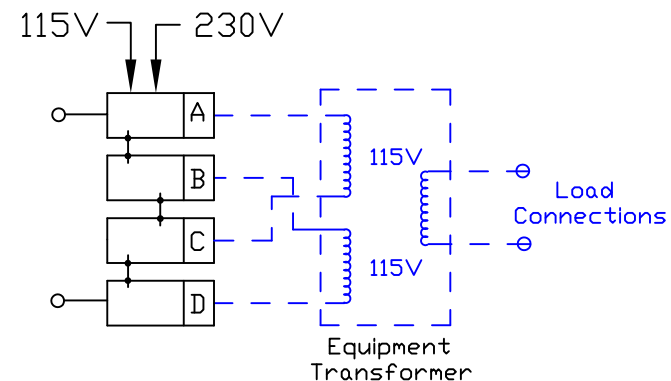
- 1) Use wire of sufficient size to handle the amperage needed for the application. Interpower offers various colors and sizes of hook-up wire for your convenience.
- 2) Use 4.8mm x 0.8mm female fast-ons for wire terminations. Note that the ground connection can be soldered if desired or required.
- 3) In order to make output connection easier, Interpower offers output wire harnesses. Part 63500100 for two wire output applications and part 63500110 for four wire output applications.
- 4) Jumper wires are also available for convenience (brown - 63500120 and blue - 63500130). Custom wires can be ordered.
- 5) In the event that a module is being used that has a voltage selector and it is determined that it is no longer needed, the voltage selection function can be disabled and by-passed by simply using only pins A and D as outputs and leaving pins B and C unconnected.
- 6) Care should be used when connecting fast-ons with terminals while using pliers. Excessive force with the pliers on the female fast-on can close the gap causing excess wear to the terminals and in some cases, cause the terminals to be loosened in the module housing.
- 7) The addition of external components (for added functionality) between the module sections is possible by redirecting the wiring path from the output of one functional section of the module, running the wiring to the external component, and then returning to the input of the next section of the module. An example would be the addition of a power "ON" indicator or a meter between the switch section and the fuse/voltage selection portion of the module.
- 8) Interpower Corporation offers made-to-order wiring and fuse installation services when it does not fit the equipment manufacturer's manufacturing model to do the wiring themselves. Contact the Customer Service Department for a quotation regarding your particular needs.

Output Connection Schematics

Modules without Voltage Selection



Modules with a Voltage Selector



--- = User supplied/part of equipment

| | | | | | | | |
|--|--|--|--|------------------------------|--|--|--|
| THIS DOCUMENT AND ITS CONTENTS ARE THE PROPRIETARY CONFIDENTIAL PROPERTY OF INTERPOWER CORPORATION. NO USE OR COPIES MAY BE MADE WITHOUT WRITTEN PERMISSION FROM INTERPOWER CORPORATION. | | | | DIMENSIONS IN INCHES | | TITLE: Wiring Diagram and Information for Filtered Modules | |
| | | | | DRAFT BY: DDF | | DATE: 07/06/09 | |
| | | | | DRAFTING APPROVAL: | | PART NUMBERS: 83545000, 83545010, 83545020, 83545030, 83545040, 83545050, 83545070, 83544000, 83544010, 83544050, 83543040 | |
| | | | | Document Number: WI 99938354 | | DO NOT SCALE | |
| A Created Document | | | | 7/06/09 | | SHEET 1 OF 1 | |
| REV | | | | CHANGE DESCRIPTION | | INTERPOWER CORPORATION | |