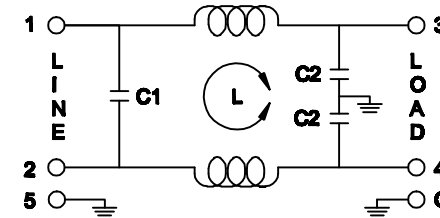
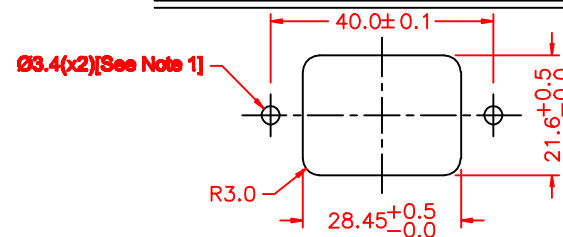


Maximum Leakage Current (L-G) @115VAC/60Hz	Maximum Leakage Current (L-G) @250VAC/50Hz	Min. common mode insertion loss (L-G) (dB in 50 ohm sys.) Freq. - MHz							
		.01	.05	.10	.15	.50	1.0	5.0	10
0.20mA	0.40mA	Min. differential mode insertion loss (L-L) (dB in 50 ohm sys.) Freq. - MHz							
		/	1	2	4	10	15	25	30

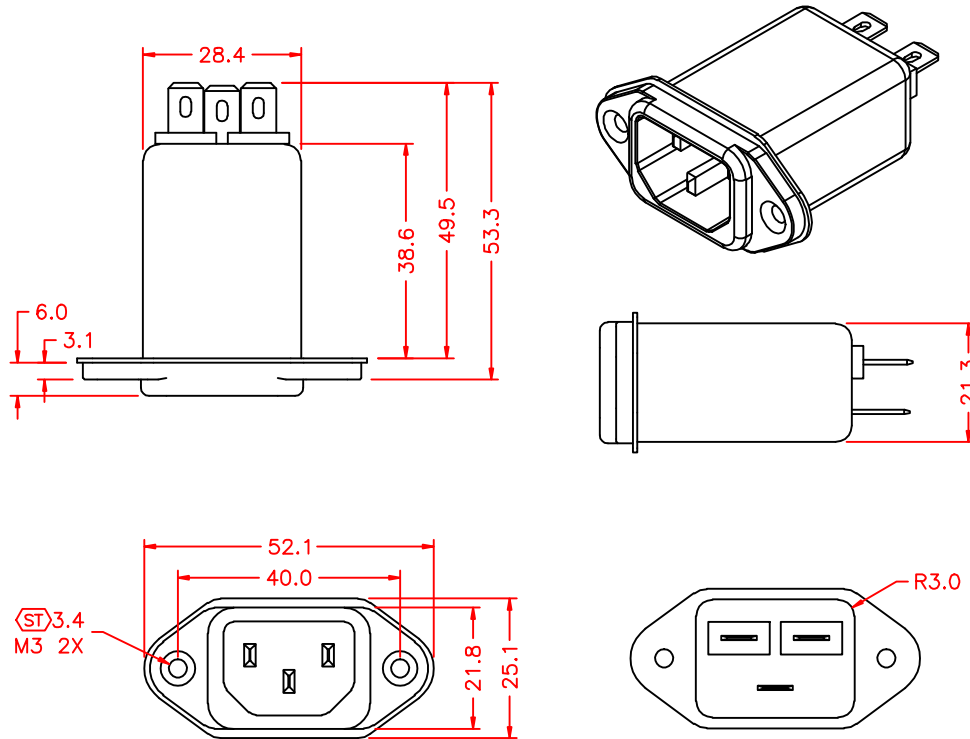


L: 0.2mH
C1: 0.1uF
C2: 2200pF

**SUGGESTED MOUNTING CUTOUT
(MOUNTING FROM FRONT)**



Note 1: Recommended diameter for thru-hole (screw/nut combination) hardware mounting method. Other methods will require holes with different dimensions and parameters.



THIS DOCUMENT AND ITS CONTENTS ARE THE PROPRIETARY CONFIDENTIAL PROPERTY OF INTERPOWER CORPORATION. NO USE OR COPIES MAY BE MADE WITHOUT WRITTEN PERMISSION FROM INTERPOWER CORPORATION.

DIMENSIONS IN MILLIMETERS

TITLE
EMI FILTER

DRAFT BY: **ATS/NWH** DATE: **04/24/08**

PART NUMBER: **83510443**

DRAFTING APPROVAL: **JPC** DATE: **06/04/08**

MATERIAL:

DO NOT SCALE

INTERPOWER CORPORATION

A	Added dimension information to cutout screw holes and Note 1. DDF	3/28/12
REV	CHANGE DESCRIPTION	DATE

SHEET **1** OF **1**