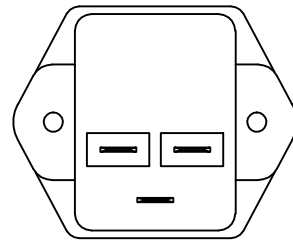
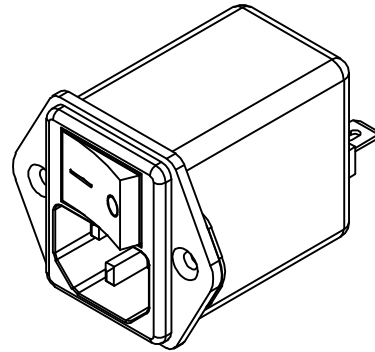
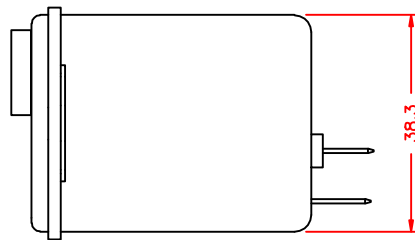
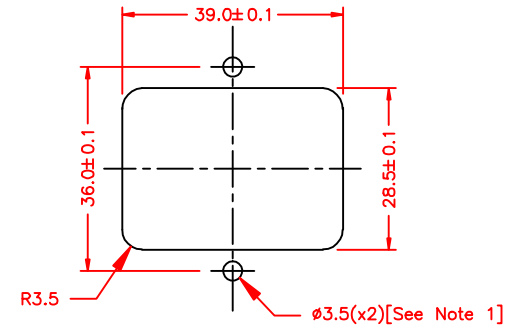
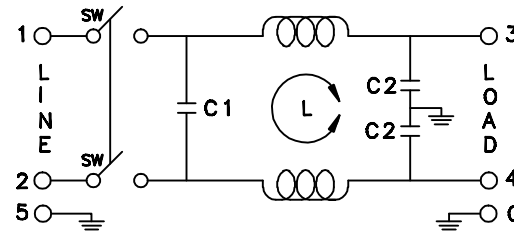
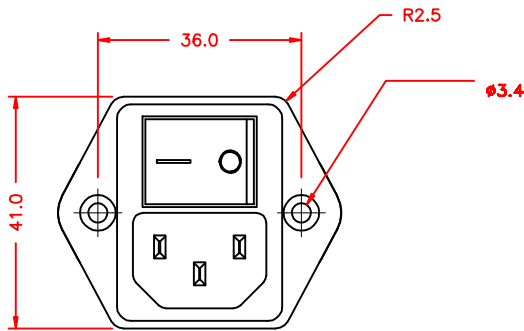


L: 0.3mH
C1: 0.1uF
C2: 2200pF



Maximum Leakage Current (L-G) @115VAC/60Hz	Maximum Leakage Current (L-G) @250VAC/50Hz	Min. common mode insertion loss (L-G) (dB in 50 ohm sys.) Freq. - MHz								
		.01	.05	.10	.15	.50	1.0	5.0	10	30
		/	1	4	5	10	20	30	35	35
0.20mA	0.40mA	Min. differential mode insertion loss (L-L) (dB in 50 ohm sys.) Freq. - MHz								
		.01	.05	.10	.15	.50	1.0	5.0	10	30
		/	/	2	4	10	10	30	30	35

SUGGESTED MOUNTING CUTOUT
(MOUNTING FROM FRONT)



Note 1: Recommended diameter for thru-hole (screw/nut combination) hardware mounting method. Other methods will require holes with different dimensions and parameters.

THIS DOCUMENT AND ITS CONTENTS ARE THE PROPRIETARY CONFIDENTIAL PROPERTY OF INTERPOWER CORPORATION. NO USE OR COPIES MAY BE MADE WITHOUT WRITTEN PERMISSION FROM INTERPOWER CORPORATION.				DIMENSIONS IN MILLIMETERS		TITLE EMI FILTER	
				DRAFT BY: ATS/NWH DATE: 04/24/08		PART NUMBER: 83510470	
				DRAFTING APPROVAL: JPC DATE: 05/23/08			
A Added dimension information to cutout screw holes and Note 1. DDF 3/30/12				MATERIAL:		DO NOT SCALE	
REV CHANGE DESCRIPTION DATE						INTERPOWER CORPORATION	
						SHEET 1 OF 1	