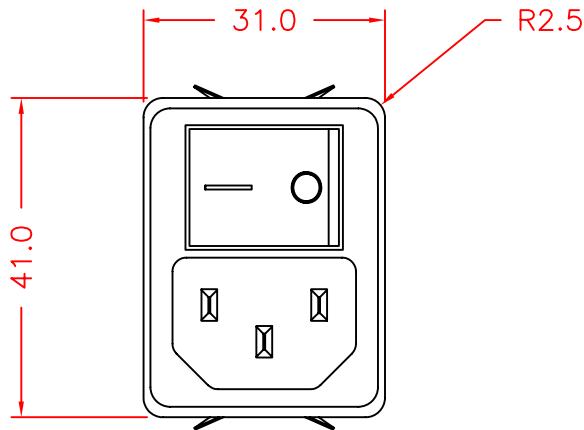
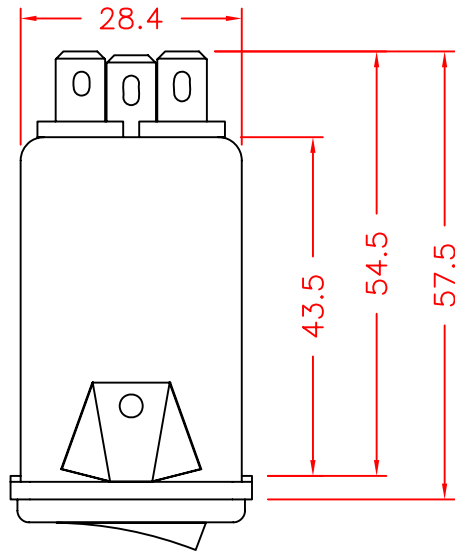
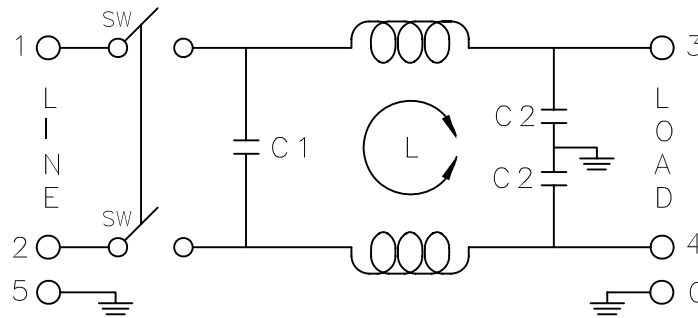


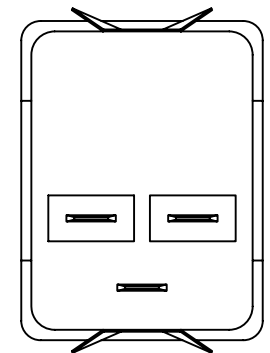
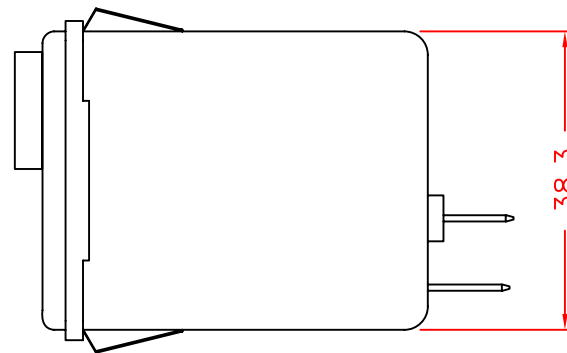
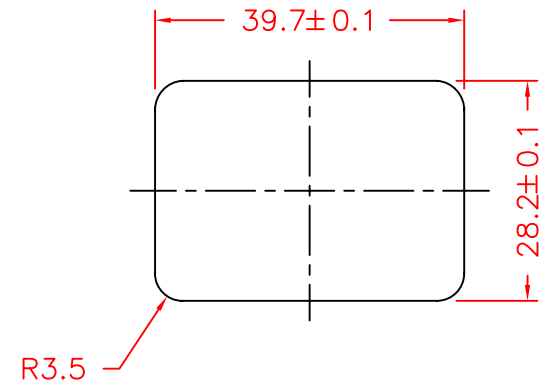
L: 0.3mH
 C1: 0.1uF
 C2: 2200pF



Maximum Leakage Current (L-G) @115VAC / 60Hz	Maximum Leakage Current (L-G) @250VAC / 50Hz	Min. common mode insertion loss (L-G) (dB in 50 ohm sys.) Freq. - MHz							
		.01	.05	.10	.15	.50	1.0	5.0	10
0.20mA	0.40mA	Min. differential mode insertion loss (L-L) (dB in 50 ohm sys.) Freq. - MHz							
		/	/	1	2	10	12	47	50



SUGGESTED MOUNTING CUTOUT
 (MOUNTING FROM FRONT)



THIS DOCUMENT AND ITS CONTENTS ARE THE PROPRIETARY CONFIDENTIAL PROPERTY OF INTERPOWER CORPORATION. NO USE OR COPIES MAY BE MADE WITHOUT WRITTEN PERMISSION FROM INTERPOWER CORPORATION.

DIMENSIONS IN MILLIMETERS

TITLE

EMI FILTER

DRAFT BY: ATS/NWH DATE: 04/24/08

PART NUMBER:

83510480

DRAFTING APPROVAL: JPC DATE: 05/23/08

MATERIAL:

DO NOT SCALE

INTERPOWER CORPORATION

REV

CHANGE DESCRIPTION

DATE

SHEET 0f 1