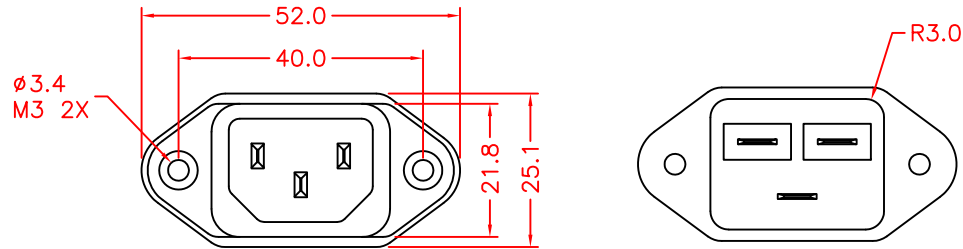
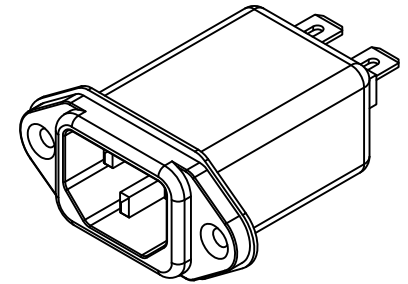
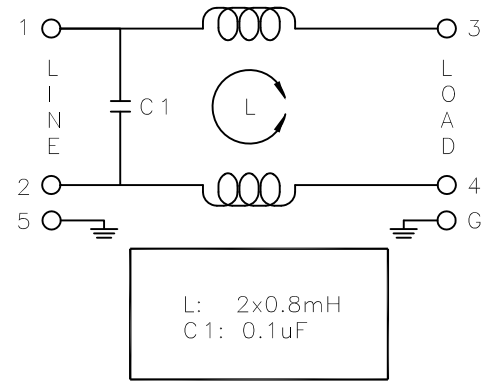
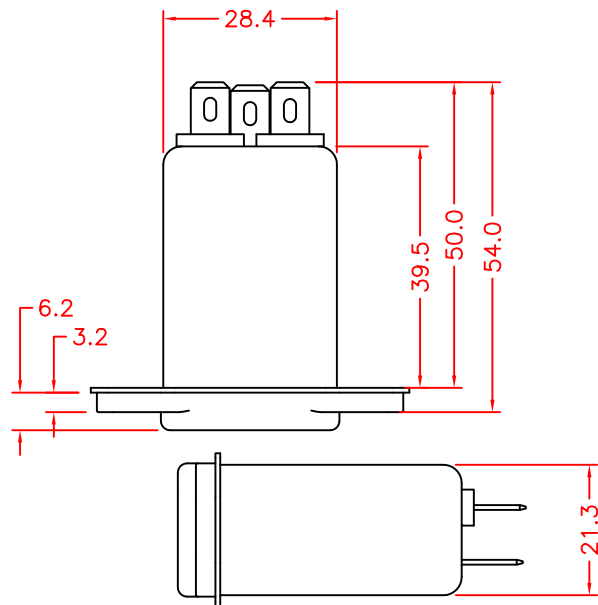
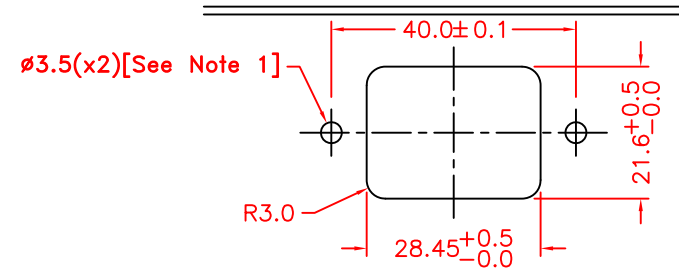


Maximum Leakage Current (L-G) @115VAC/60Hz	Maximum Leakage Current (L-G) @250VAC/50Hz	Min. common mode insertion loss (L-G) (dB in 50 ohm sys.) Freq. - MHz								
		.01	.05	.10	.15	.50	1.0	5.0	10	30
2 μ A	5 μ A	Min. differential mode insertion loss (L-L) (dB in 50 ohm sys.) Freq. - MHz								
		1	5	8	10	10	12	12	10	
		Min. common mode insertion loss (L-G) (dB in 50 ohm sys.) Freq. - MHz								
		.01	.05	.10	.15	.50	1.0	5.0	10	30
		Min. differential mode insertion loss (L-L) (dB in 50 ohm sys.) Freq. - MHz								
		/	0	2	4	10	15	20	20	20



SUGGESTED MOUNTING CUTOUT
(MOUNTING FROM FRONT)



Note 1: Recommended diameter for thru-hole (screw/nut combination) hardware mounting method. Other methods will require holes with different dimensions and parameters.

THIS DOCUMENT AND ITS CONTENTS ARE THE PROPRIETARY CONFIDENTIAL PROPERTY OF INTERPOWER CORPORATION. NO USE OR COPIES MAY BE MADE WITHOUT WRITTEN PERMISSION FROM INTERPOWER CORPORATION.				DIMENSIONS IN MILLIMETERS		TITLE Two Function Hospital Grade Power Entry Module	
C	Corrected inductor value to 2x0.8mH (incorrectly listed 6.5mH).	1/21/14	DDF	DRAFT BY:	ATS/NWH	DATE:	04/24/08
B	Added dimension information to cutout screw holes and Note 1.	3/30/12	DDF	DRAFTING APPROVAL:	JPC	DATE:	06/04/08
A	Updated description in title block to say "Hospital Grade"	2/22/12	RLT	MATERIAL:	DO NOT SCALE		INTERPOWER CORPORATION
REV	CHANGE DESCRIPTION	DATE	INITIALS	SHEET 1 OF 1			