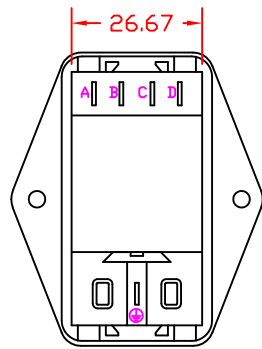
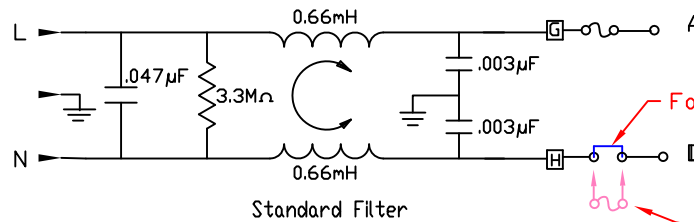


∅3.2(x2)[See Note 1]

This cutout is good for both front and back mounting applications. However, with back mount applications, the panel thickness is recommended to not exceed 1.5mm.



Back View Filtered



Standard Filter

Factory Installed Fuse Clip (Jumper) *

Double fuse option. *

* Note: Removal of the fuse clip allows the user the option of installing a second fuse for use in applications requiring double fusing.

Filter Specifications																		
Max. Leakage Current (L-G) @ 120VAC/60Hz	Max. Leakage Current (L-G) @ 250VAC/50Hz		Min. common mode insertion loss (L-G) (dB in 50 ohm system) Freq. - MHz					Min. differential mode insertion loss (L-L) (dB in 50 ohm system) Freq. - MHz										
			.03	.10	.15	.50	1.0	3.0	5.0	10	30	.10	.15	.50	1.0	3.0	5.0	10
Hospital Grade			Hospital Grade Models															
2.0 micro-amps	5.0 micro-amps	6 A	8	11	15	17	19	18	16	13	2	4	12	16	26	35	40	35
Standard			Standard Models															
0.25 mA	0.50 mA	6 A	8	12	17	23	32	36	44	30	2	4	12	15	22	42	55	45

THIS DOCUMENT AND ITS CONTENTS ARE THE PROPRIETARY CONFIDENTIAL PROPERTY OF INTERPOWER CORPORATION. NO USE OR COPIES MAY BE MADE WITHOUT WRITTEN PERMISSION FROM INTERPOWER CORPORATION.

Note 1: Recommended diameter for thru-hole (screw/nut combination) hardware mounting method. Other methods will require holes with different dimensions and parameters.

DIMENSIONS IN MILLIMETERS

TITLE Module

DRAFT BY: DDF DATE: 7/25/17

DRAFTING APPROVAL: DDF DATE: 7/25/17

PART NUMBER: 83543041

MATERIAL:

DD NOT SCALE

INTERPOWER CORPORATION

SHEET 1 OF 1

REV	CHANGE DESCRIPTION	DATE	INITIALS
A	Introduction of replacement for 83543040.	7/25/17	DDF