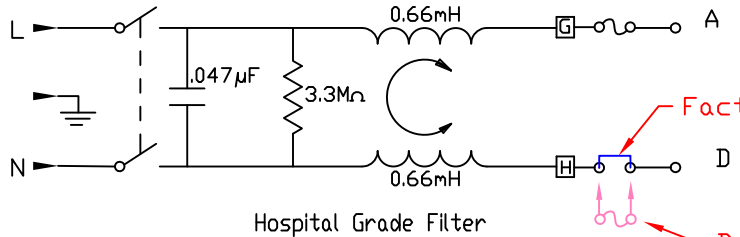


Back View Filtered

Stamp hole from installation side to insure proper engagement of snap mechanisms.

\* Dimension for panel thickness of 0.8 to 2.0mm. For panel thickness of 2.1 to 2.9mm, use value of 56.21mm.

Filter Specifications																				
Max. Leakage Current (L-G) @ 120VAC/60Hz	Max. Leakage Current (L-G) @ 250VAC/50Hz		Min. common mode insertion loss (L-G) (dB in 50 ohm system) Freq. - MHz						Min. differential mode insertion loss (L-L) (dB in 50 ohm system) Freq. - MHz											
			.03	.10	.15	.50	1.0	3.0	5.0	10	30	.10	.15	.50	1.0	3.0	5.0	10	30	
Hospital Grade			Hospital Grade Models																	
2.0 micro-amps	5.0 micro-amps	6 A	8	11	15	17	19	18	16	13	2	4	12	16	26	35	40	35		
Standard			Standard Models																	
0.25 mA	0.50 mA	6 A	8	12	17	23	32	36	44	30	2	4	12	15	22	42	55	45		



Factory Installed Fuse Clip (Jumper) \*

Double fuse option. \*

\* Note: Removal of the fuse clip allows the user the option of installing a second fuse for use in applications requiring double fusing.

THIS DOCUMENT AND ITS CONTENTS ARE THE PROPRIETARY CONFIDENTIAL PROPERTY OF INTERPOWVER CORPORATION. NO USE OR COPIES MAY BE MADE WITHOUT WRITTEN PERMISSION FROM INTERPOWVER CORPORATION.

REV	CHANGE DESCRIPTION	DATE	INITIALS
E	Corrected typo in panel thickness: .08 to 0.8mm.	1/20/15	DDF
D	Updated description in title block to say "Hospital Grade"	2/22/12	RLT
C	Updated drawing - new boss design/location.	1/27/11	DDF
B	Added back view to drawing.	6/21/07	DDF
A	Updated schematic and added notes in reference to fuse clip and the double fusing option (clarification).	02/08/05	DDF

DIMENSIONS IN MILLIMETERS		TITLE	
DRAFT BY: DDF	DATE: 2-8-2005	Four Function Hospital Grade, Fused Snap-in Module	
DRAFTING APPROVAL: JC	DATE: 2-8-2005	PART NUMBER:	83544050
MATERIAL:	DO NOT SCALE	INTERPOWVER CORPORATION	
	SHEET 1 OF 1		