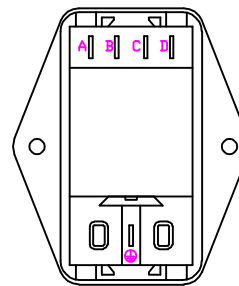
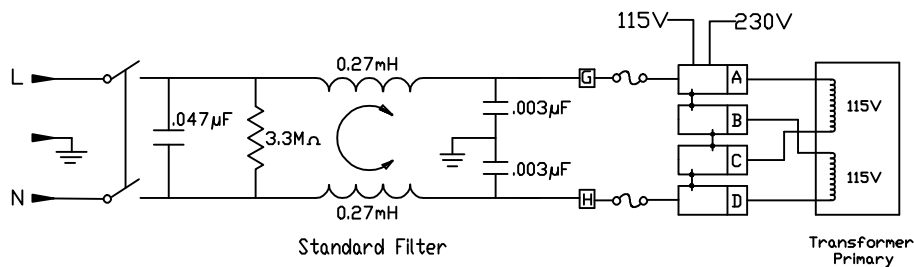


This cutout is good for both front and back mounting applications. However, with back mount applications, the panel thickness is recommended to not exceed 1.5mm.

Filter Specifications			
Max. Leakage Current (L-G) @ 120VAC/60Hz	Max. Leakage Current (L-G) @ 250VAC/50Hz	Min. common mode insertion loss (L-G) (dB in 50 ohm system) Freq. - MHz	Min. differential mode insertion loss (L-L) (dB in 50 ohm system) Freq. - MHz
Hospital Grade		Hospital Grade Models	
2.0 micro-amps	5.0 micro-amps	10 A	3 5 8 10 12 11 10 10 2 4 12 16 26 33 40 32
Standard		Standard Models	
0.25 mA	0.50 mA	10 A	3 5 10 13 23 27 35 27 2 4 12 15 22 42 55 45



Back View Filtered



Standard Filter

Transformer Primary

Note 1: Recommended diameter for thru-hole (screw/nut combination) hardware mounting method. Other methods will require holes with different dimensions and parameters.

THIS DOCUMENT AND ITS CONTENTS ARE THE PROPRIETARY CONFIDENTIAL PROPERTY OF INTERPOWER CORPORATION. NO USE OR COPIES MAY BE MADE WITHOUT WRITTEN PERMISSION FROM INTERPOWER CORPORATION.

REVISIONS				DIMENSIONS IN MILLIMETERS		TITLE	
D	Added dimension information to cutout screw holes and Note 1.	4/4/12	DDF	DRAFT BY: JPC DATE: 5-5-2003		Module	
C	Added countersink information.	1/11/11	DDF	DRAFTING APPROVAL: JPC DATE: 5-5-2003		PART NUMBER: 83545010	
B	Updated drawing for boss changes..	10/08/10	DDF	MATERIAL:		DO NOT SCALE	
A	Added back view to the drawing.	6/21/07	DDF			INTERPOWER CORPORATION	
REV	CHANGE DESCRIPTION	DATE	INITIALS			SHEET 1 OF 1	