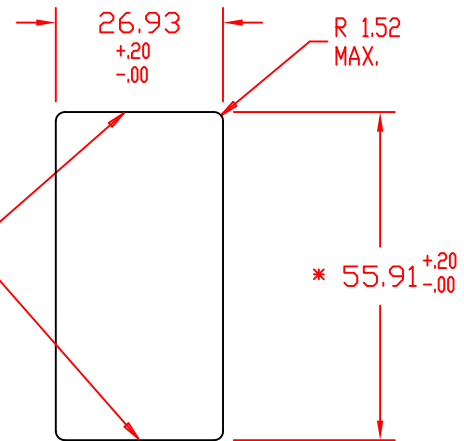
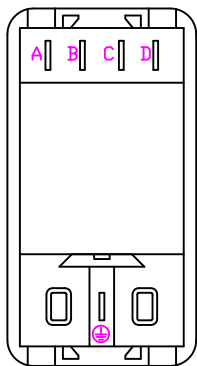


Stamp hole from installation side to insure proper engagement of snap mechanisms.

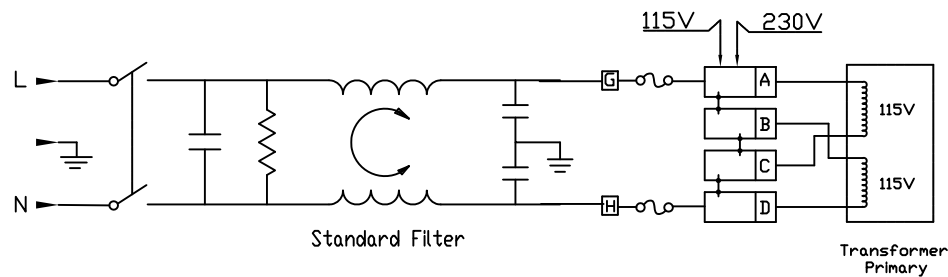


* Dimension for panel thickness of 0.8 to 2.0mm. For panel thickness of 2.1 to 2.9mm, use value of 56.21mm.



Back View Filtered

Filter Specifications																										
Max. Leakage Current (L-G) @ 120VAC/60Hz	Max. Leakage Current (L-G) @ 250VAC/50Hz		Min. common mode insertion loss (L-G) (dB in 50 ohm system) Freq. - MHz										Min. differential mode insertion loss (L-L) (dB in 50 ohm system) Freq. - MHz													
			.03	.10	.15	.50	1.0	3.0	5.0	10	30	.10	.15	.50	1.0	3.0	5.0	10	30							
Hospital Grade			Hospital Grade Models																							
2.0 micro-amps	5.0 micro-amps	6 A	8	11	15	17	19	18	16	13	2	4	12	16	26	35	40	35								
Standard			Standard Models																							
0.25 mA	0.50 mA	6 A	8	12	17	23	32	36	44	30	2	4	12	15	22	42	55	45								



Standard Filter

Transformer Primary

THIS DOCUMENT AND ITS CONTENTS ARE THE PROPRIETARY CONFIDENTIAL PROPERTY OF INTERPOWER CORPORATION. NO USE OR COPIES MAY BE MADE WITHOUT WRITTEN PERMISSION FROM INTERPOWER CORPORATION.

DIMENSIONS IN MILLIMETERS

TITLE Module

REV	CHANGE DESCRIPTION	DATE	INITIALS
C	Corrected typo in panel thickness: .08 to 0.8mm.	1/20/15	DDF
B	Updated drawing - new boss design/location.	1/27/11	DDF
A	Added back view to drawing.	6/21/07	DDF

DRAFT BY: JPC DATE: 5-5-2003
 DRAFTING APPROVAL: DATE:

PART NUMBER: 83545040

MATERIAL:

DO NOT SCALE
 SHEET 1 OF 1

INTERPOWER CORPORATION