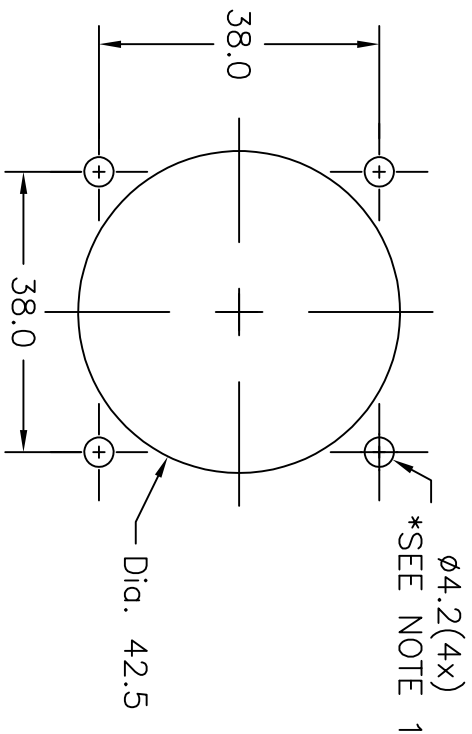
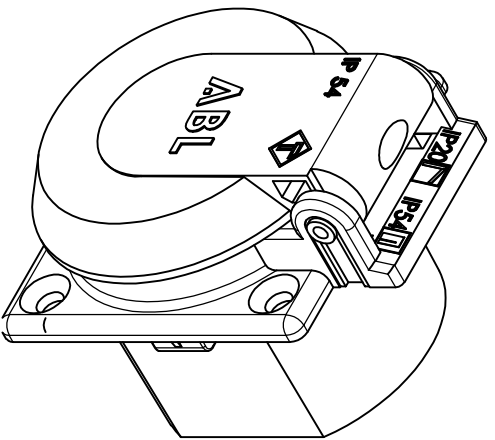
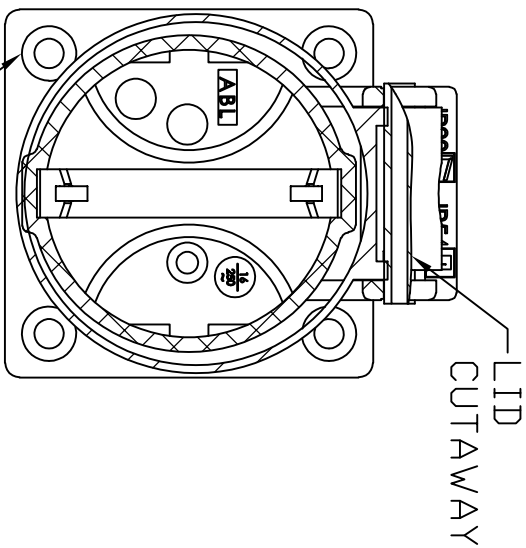


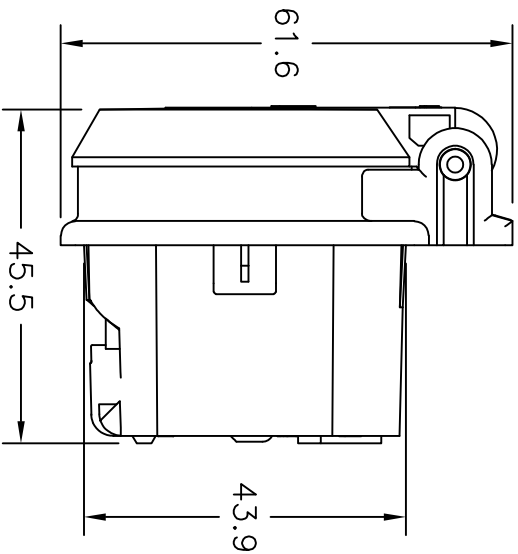
TOP VIEW



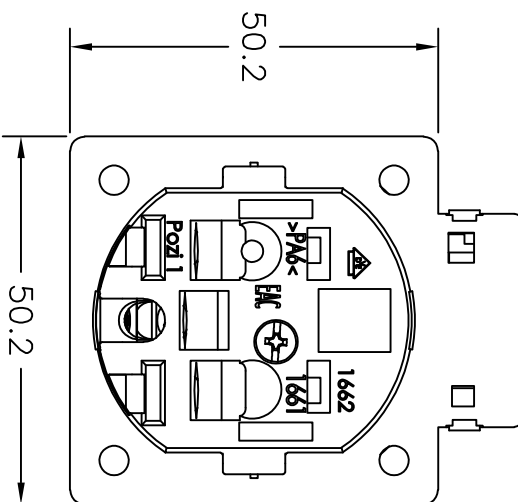
Note 1: Recommended diameter for thru-hole (screw/nut combination) hardware mounting method. Other methods will require holes with different dimensions and parameters.



FRONT VIEW



RIGHT SIDE VIEW



BACK VIEW

WARNING: Neutral & Line connections can be reversed.
CEE7 sockets are not polarized.

THIS DOCUMENT AND ITS CONTENTS ARE THE PROPRIETARY CONFIDENTIAL PROPERTY OF INTERPOWER CORPORATION. NO USE OR COPIES MAY BE MADE WITHOUT WRITTEN PERMISSION FROM INTERPOWER CORPORATION.

REV	DESCRIPTION	INITIALS	DATE
A	Introduction of part replacing 88010303.	DDF	02/04/2020
	CHANGE DESCRIPTION		

DIMENSIONS IN MILLIMETERS		TITLE	
DRAFT BY: DDF	DATE: 02/04/2020	16A/250V CONT EUROPEAN SPLASH RESISTANT SOCKET	
DRAFTING APPROVAL: DDF	DATE: 02/04/2020	PART NUMBER: 88010304	INTERPOWER CORPORATION
MATERIAL: POLYAMIDE 6	SCALE: FULL SCALE	SHEET 1 OF 1	