

Connect to the World



Order online:
www.interpower.com

P.O. Box 115, Oskaloosa, IA 52577 (USA)
Call: (641) 673-5000 Fax: (641) 673-5100
E-mail: info@interpower.com

Toll-free (U.S./Can./P.R./V.I.)
Call toll-free: (800) 662-2290
Fax toll-free: (800) 645-5360



rev. 6-10

Continental European

For use in Germany, Austria, Finland, the Netherlands, Norway, Sweden, France/Belgium, and other countries utilizing the CEE 7 standard. (Note: Sweden requires use of socket with separate mounting bracket. France/Belgium require use of different socket types.) The CEE 7/7 is non-polarized.



For black (88010920)

Plug with Strain Relief
Part Number 88010801
Type CEE 7/7
Color Gray
Rating 16A/250VAC
Approvals



For black (88010611) socket

Screw-Mount Socket
Part Number 88010610
Type CEE 7
Color Ivory
Rating 16A/250VAC
Approvals



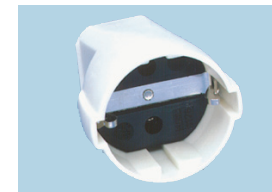
For black (88010500) socket

Panel-Mounting Socket
Part Number 88010500
Type CEE 7
Color White
Rating 16A/250VAC
Approvals



For black (88010200) socket

Duplex Socket
Part Number 88010200
Type CEE 7
Color Ivory
Rating 16A/250VAC
Approvals



For black (88010390) socket

Socket with Strain Relief
Part Number 88010400
Type CEE 7
Color Ivory
Rating 16A/250VAC
Approvals



For black (88010350) socket

Panel-Mount Socket
Part Number 88010300
Type CEE 7
Color Gray
Rating 16A/250VAC
Approvals
IP 54 "splashproof"

Europlugs

Interpower Europlugs are wireable. Once shut, they cannot be reopened. For use in Germany, Austria, Finland, the Netherlands, Norway, Sweden, France/Belgium, and other countries utilizing the CEE 7 standard.



Plug
Part Number 88040030
Type CEE 7/16
Color Black
Rating 2.5A/250VAC
Approvals

Australian

Plugs and in-line sockets are also acceptable for use in New Zealand according to the New Zealand Ministry of Energy. Interpower Corporation also offers medical and higher amperage re-wireable plugs and sockets. See www.interpower.com for more information



Plug
Part Number 88010713
Type AS/NZS 3112
Color White
Rating 10A/250VAC
Approvals Department of Fair Trading



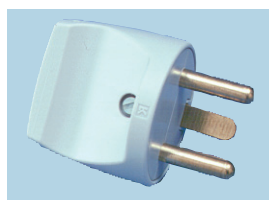
Panel-Mounting Socket
Part Number 88010512
Type AS/NZS 3112
Color White
Rating 10A/250VAC
Approvals Department of Fair Trading



In-line Socket
Part Number 88010411
Type AS/NZS 3112
Color White
Rating 10A/250VAC
Approvals EANSW

Danish

Use a Danish plug on products to be sold in Denmark. Although the Continental European CEE 7-style plug fits into the Danish socket, the plug will not be grounded, presenting an extreme safety hazard. Medical and data versions also available. See www.interpower.com.



Plug
Part Number 88010741
Type Afsnit 107-2-D1
Color Gray
Rating 13A/250VAC
Approvals



Panel-Mounting Socket
Part Number 88010541
Type Afsnit 107-2-D1
Color White
Rating 13A/250VAC
Approvals

French/Belgian

France and Belgium use a variation of the CEE 7 socket which contains a male grounding pin and shuttering. The CEE 7/7 plug used throughout Continental Europe has a receptacle for this pin and can be used in France and Belgium. France and Belgium now require safety shuttering on all of their sockets.



Panel-Mounting Socket
Part Number 88010550
Type CEE 7
Color Ivory
Rating 16A/250VAC
Approvals —



Panel-Mounting Socket
Part Number 88010321
Type CEE 7
Color Gray
Rating 16A/250VAC
Approvals
IP X4 "splashproof"

Indian/South African

Old British standard (BS 546) used in India and parts of Southern Africa.



For black (88010230) plug

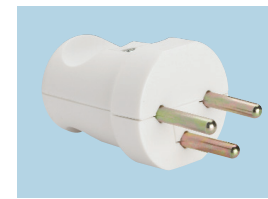
Plug
Part Number 88010763
Type BS 546
Color White
Rating 15A/250VAC
Approvals —



For black (88010220) cable mount socket

Panel-Mounting Socket
Part Number 88010561
Type BS 546
Color Ivory
Rating 15A/250VAC
Approvals —

Israeli



Plug
Part Number 88010781
Type SI 32
Color White
Rating 16A/250VAC
Approvals



Panel-Mounting Socket
Part Number 88010580
Type SI 32
Color White
Rating 16A/250VAC
Approvals

Italian



Note: This plug is non-polarized.

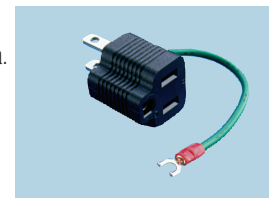


Plug
Part Number 88010771
Type CEI 23-16/VII
Color Gray/Charcoal
Rating 10A/250VAC
Approvals

Panel-Mounting Socket
Part Number 88010572
Type CEI 23-16/VII
Color Silver/Metallic
Rating 10A/250VAC
Approvals

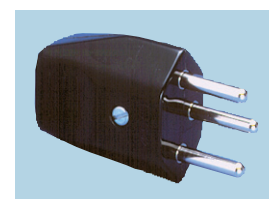
Japanese Grounding Adapter

When exporting products to Japan or other parts of the world (such as Central America) where 2-wire, non-polarized mains power is typical, include a grounding adapter to ensure that products will be grounded. Shown below is a 3-wire to 2-wire adapter with non-polarized blades.

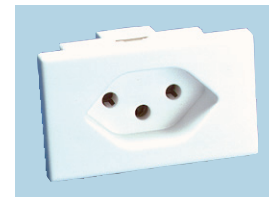


Grounding Adapter
Part Number 88100011
Type JIS 8303
Color Black
Rating 15A/125VAC
Approvals

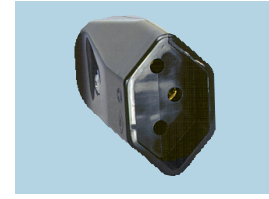
Swiss



Plug
Part Number 88010732
Type SEV 1011
Color Black
Rating 10A/250VAC
Approvals



Push-In Mounting Socket
Part Number 88010530
Type SEV 1011
Color White
Rating 10A/250VAC
Approvals



In-Line Socket
Part Number 88010431
Type SEV 1011
Color Black
Rating 10A/250VAC
Approvals



Panel-Mounting Socket
Part Number 88010330
Type SEV 1011
Color Gray
Rating 10A/250VAC
Approvals
IP X4 "splashproof"

United Kingdom/Ireland

Line and neutral contacts of socket are shuttered to minimize accidental entry of an object other than mating plug.



Europlug Converter
Part Number 88050010
Type BS 5733
Color White
Rating 2.5A/250VAC
Approvals —



Plug with integral 13A fuse. For black (88040021).

Plug
Part Number 88040011
Type BS 1363
Color White
Rating 13A/250VAC
Approvals



Panel-Mounting Shuttered Socket
Part Number 88010621
Type BS 1363
Color White
Rating 13A/250VAC
Approvals —



In-Line Shuttered Socket
Part Number 88010422
Type BS 1363
Color White
Rating 13A/250VAC
Approvals —

Line and neutral contacts are shuttered. For black (88010980).

This is only a small sample of Interpower international rewirable plugs and sockets. North American plugs and sockets also available. For specifications of these and additional plugs and sockets, see our web site (www.interpower.com) or catalog. Call for a free copy of our Catalog on CD.



Order direct from our warehouse in Oskaloosa, IA,

- No minimum order requirements
- Same day shipment available for stock item orders received by 6:00 p.m. Central Time
- Most items available from stock
- Free evaluation samples
- Assembly services available
- Technical support available